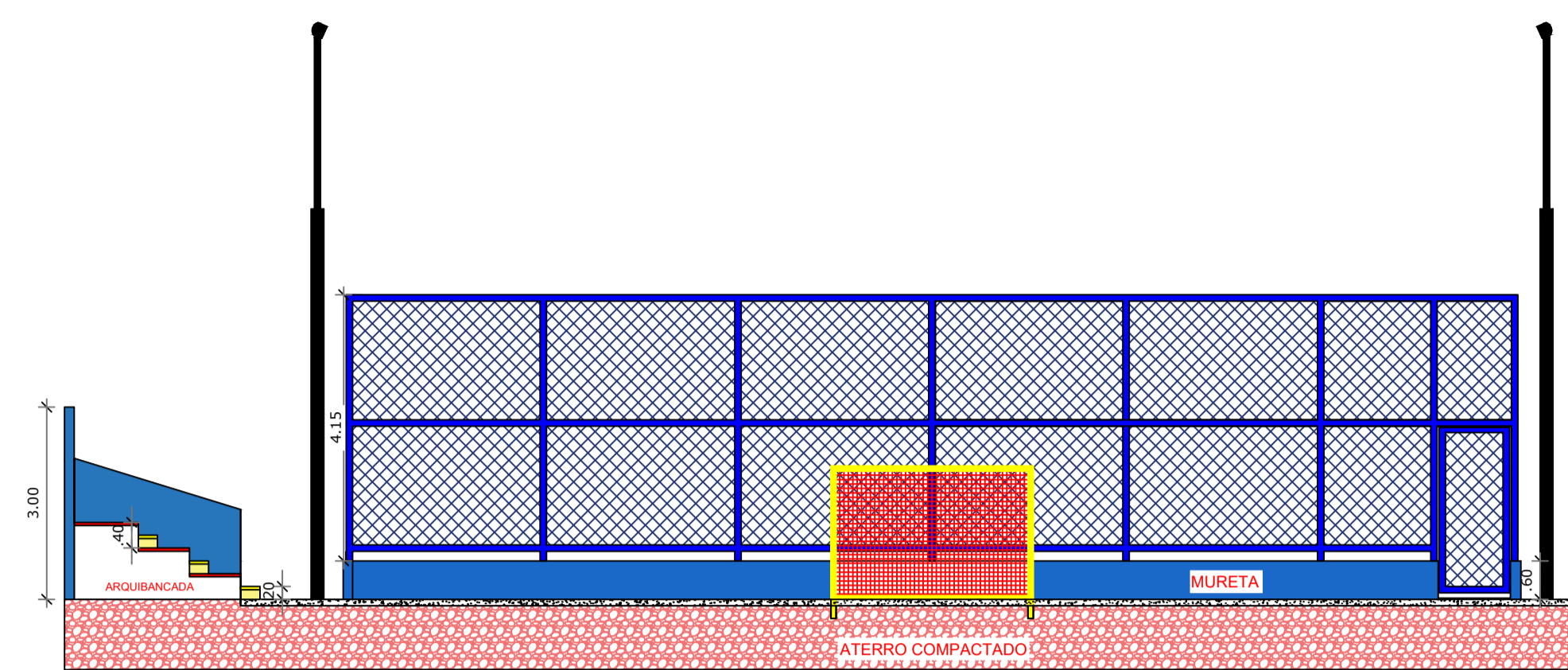
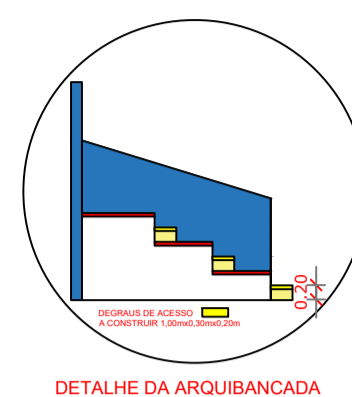
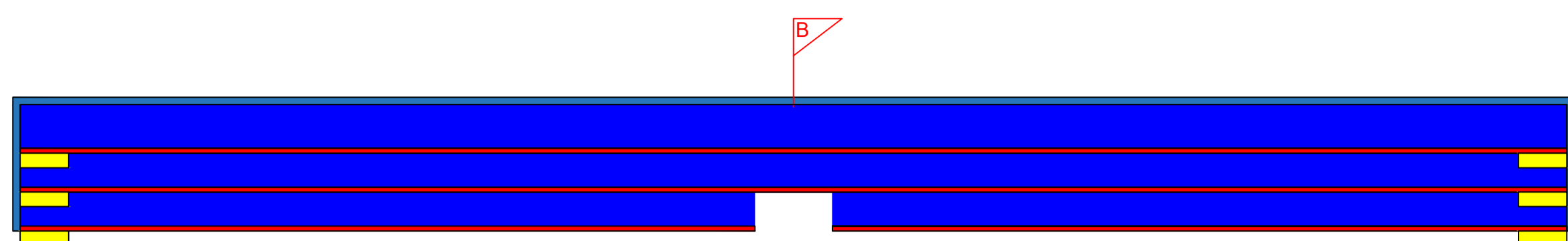
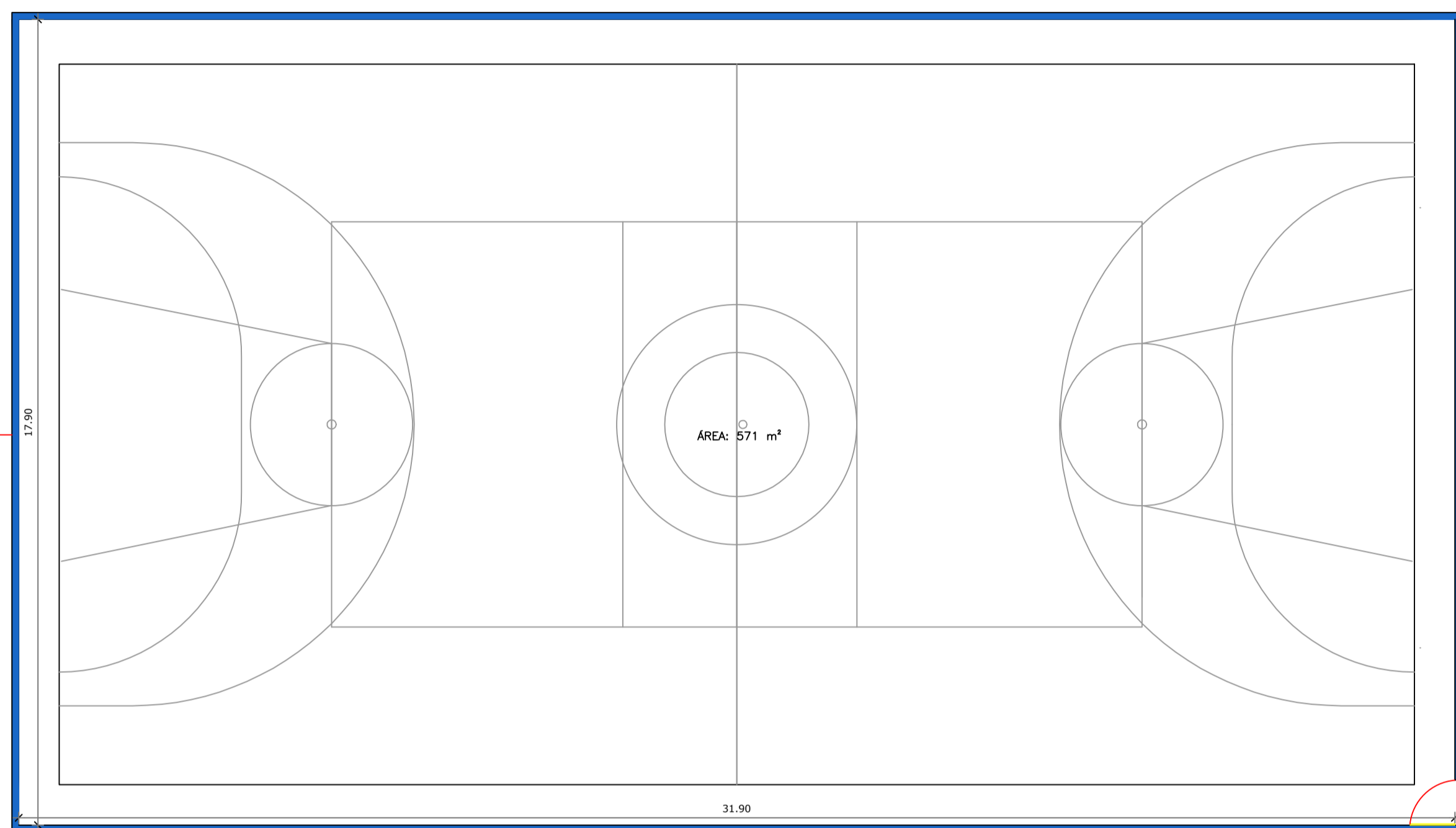


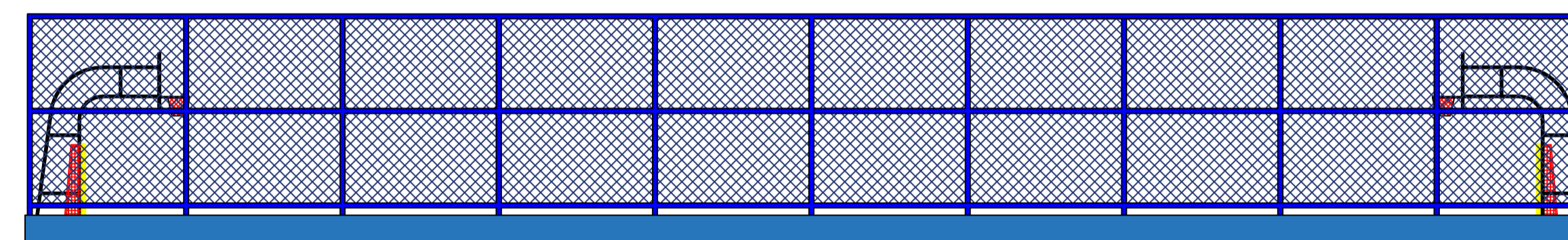
QUADRA DO MANDACARU



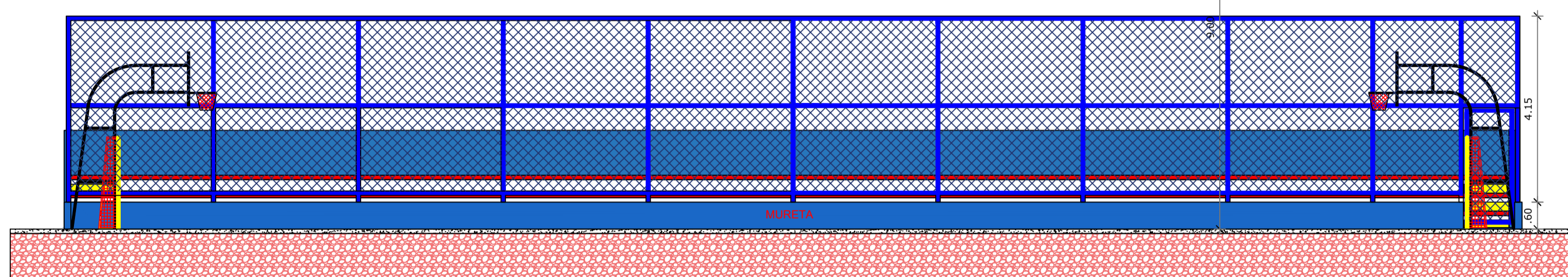
CORTE BB
ESCALA 1:100



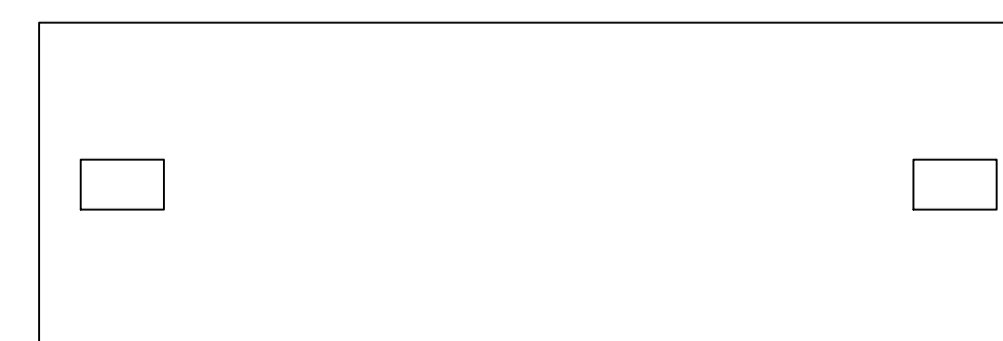
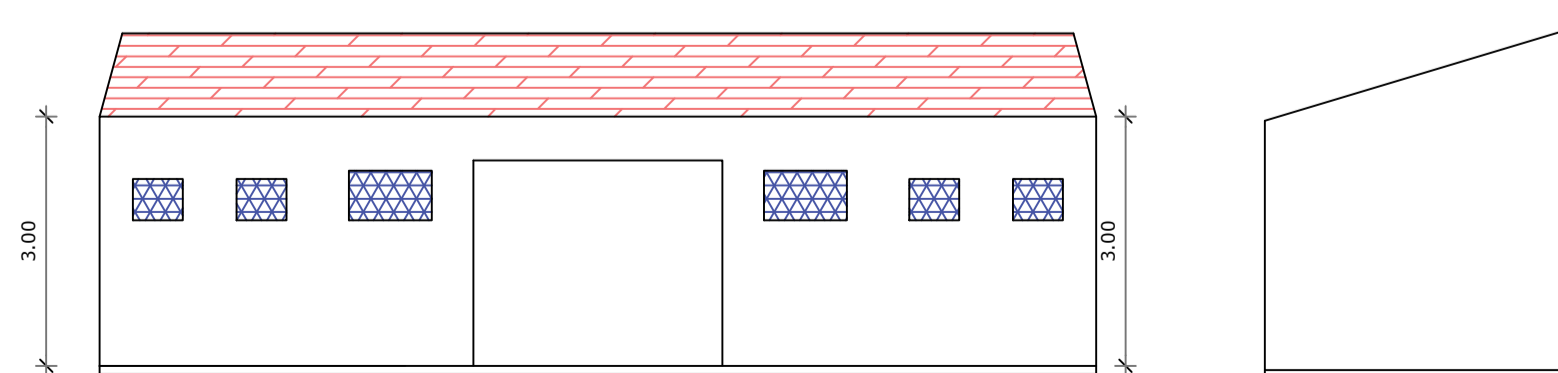
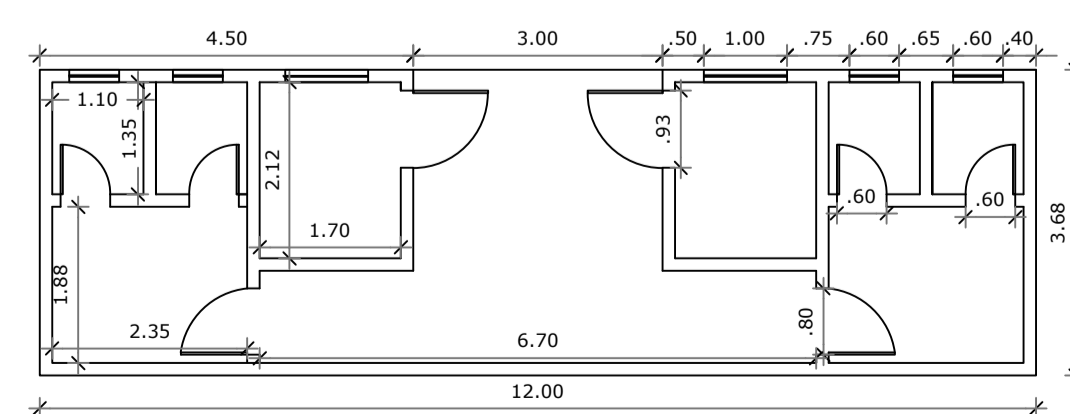
PLANTA BAIXA QUADRA POLIESPORTIVA
ESCALA 1:100



FACHADA
ESCALA 1:100



CORTE AA
ESCALA 1:100



QUADRA POLIESPORTIVA - MANDACARU			
ENDEREÇO OBRA: MUNICIPIO DE CÂNDIDO SALES		Nº ART:	
ÁREAS:	RESPONSÁVEL TÉCNICO:		PREF. MUNICIPAL ALVARÃO:
CONTRATANTE:	KARLA STEFANY SILVA CARVALHO ENGENHEIRA CIVIL CREA 022841705-4		
PREFEITURA MUNICIPAL DE CÂNDIDO SALES		DATA:	08/2022
		ESCALA:	INDICADA
CONTEM: PLANTA BAIXA, CORTE AA, CORTE BB, FACHADA, DETALHE ARQUIBANCADA			PRANCHA: 01/01