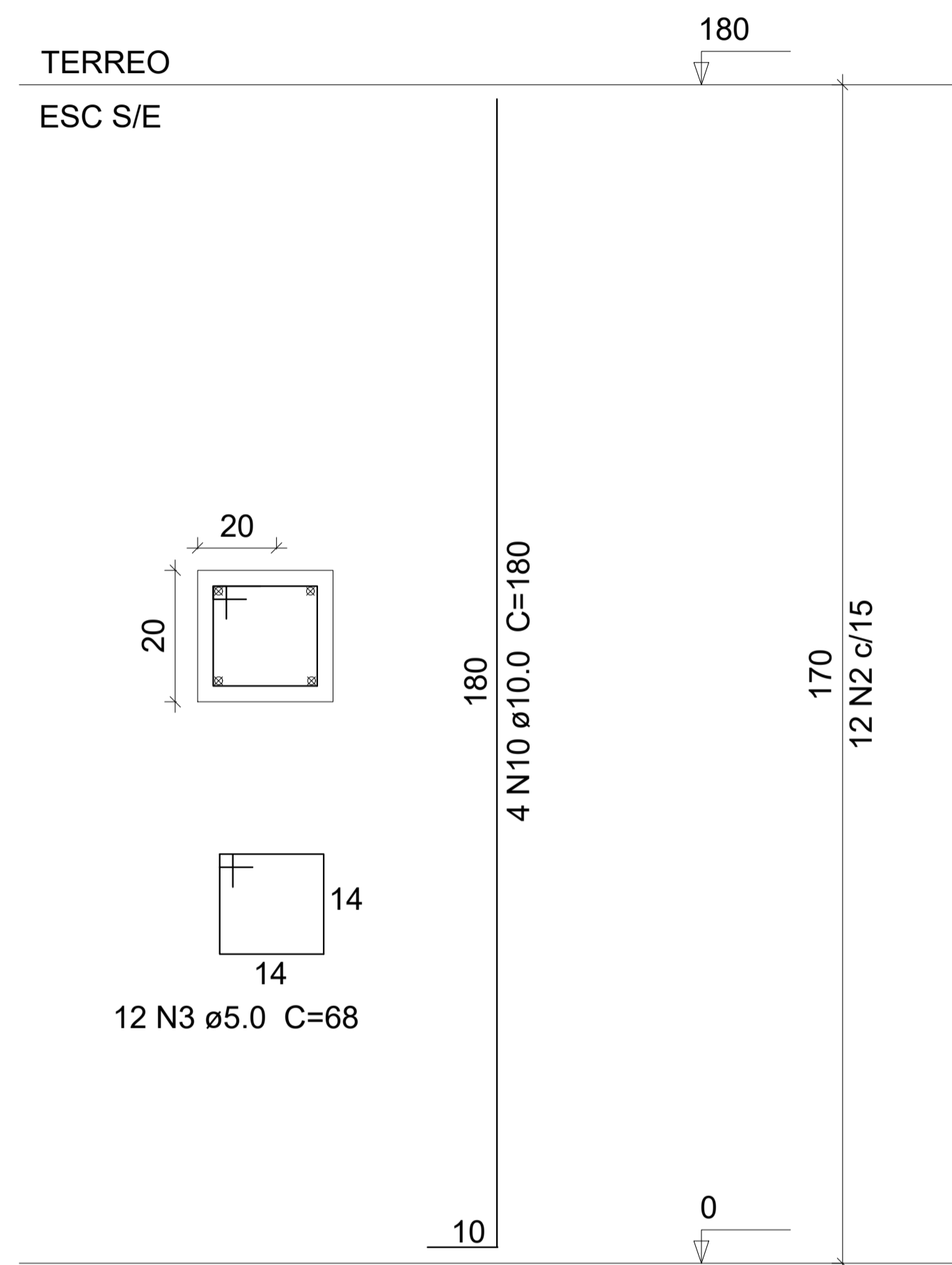


DETALHE
ESCALA 1:100

OBS.:
PILARES 20X20CM
VIGAS 20X20CM

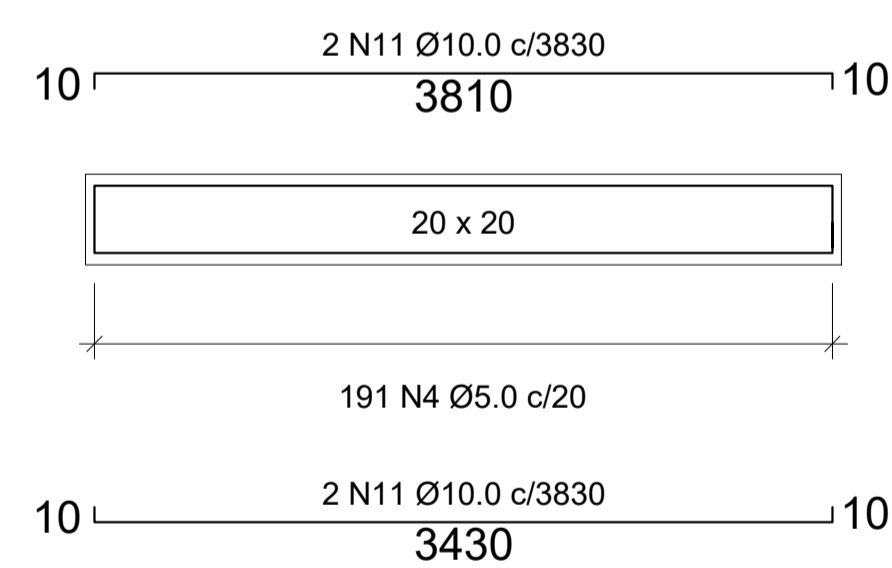
P TAMANHO ÚNICO



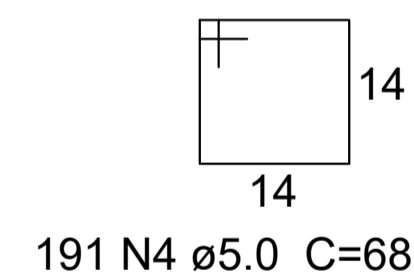
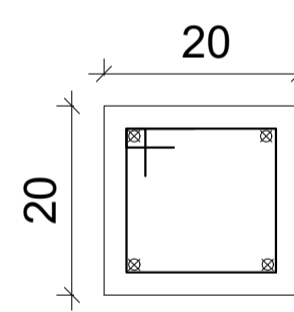
PROJETO ESTRUTURAL
ESCALA 1:100

VIGA V1 (x2) (20x20cm)
ESC S/E

COMPRIMENTO LINEAR 34,40 METROS



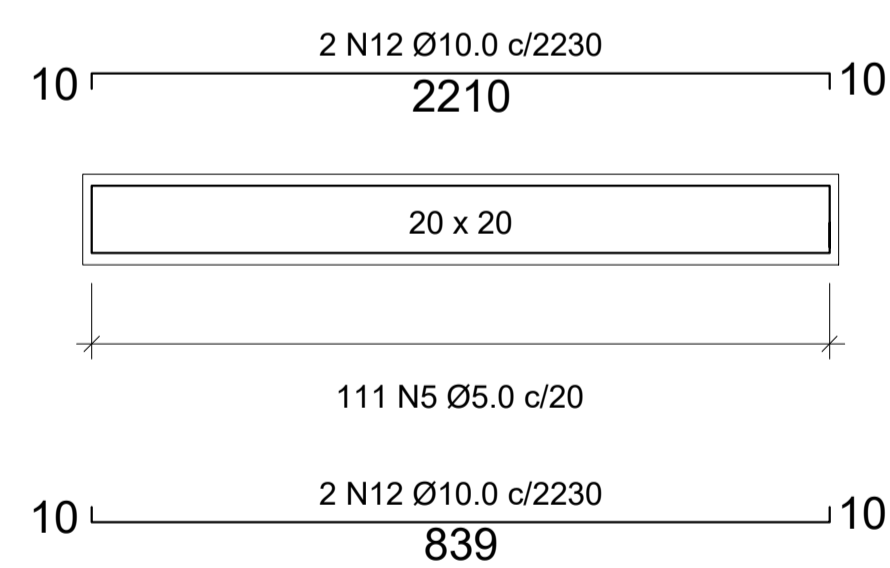
SEÇÃO A-A



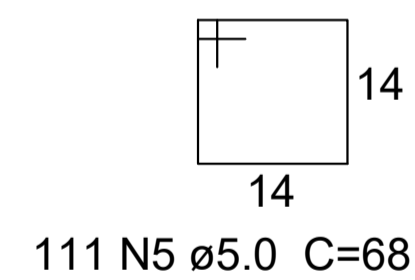
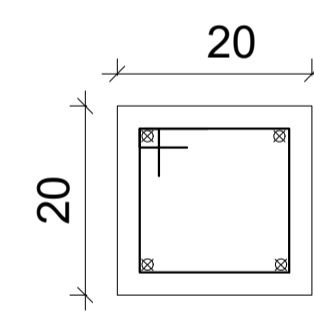
191 N4 Ø5.0 C=68

VIGA V2 (x2) (20x20cm)
ESC S/E

COMPRIMENTO LINEAR 8,49 METROS



SEÇÃO A-A



111 N5 Ø5.0 C=68

RELAÇÃO TOTAL DE AÇO:
AÇO CA-60 5.00MM - 136 KG
AÇO CA-50 10.00MM - 329 KG

FORMA (M³): 105,76
CONCRETO 25 MPA (M³): 8,88

CONCRETO MAGRO (M³) 24,08

Características dos materiais

fck (kgf/cm ²)	Ecs (kgf/cm ²)
250	238000

CONCRETO FCK 25MPA TRAÇO 1:2,3:2,7
CONCRETO MAGRO TRAÇO 1:4,5:4,5

PROJETO ESTRUTURAL		
II - Local do Projeto		
ESPIGÃO		
CONTÉM: PROJETO ESTRUTURAL COMPLETO		
R.T:	ESCALA: INDICADA	REVISÃO: 0
Solicitante: HENRIQUE DE SOUZA RODRIGUES CREA: 141978497-8 MG		DATA: 08/2022
PREFEITURA MUNICIPAL DE CANDIDO SALES		FOLHA: 03/04