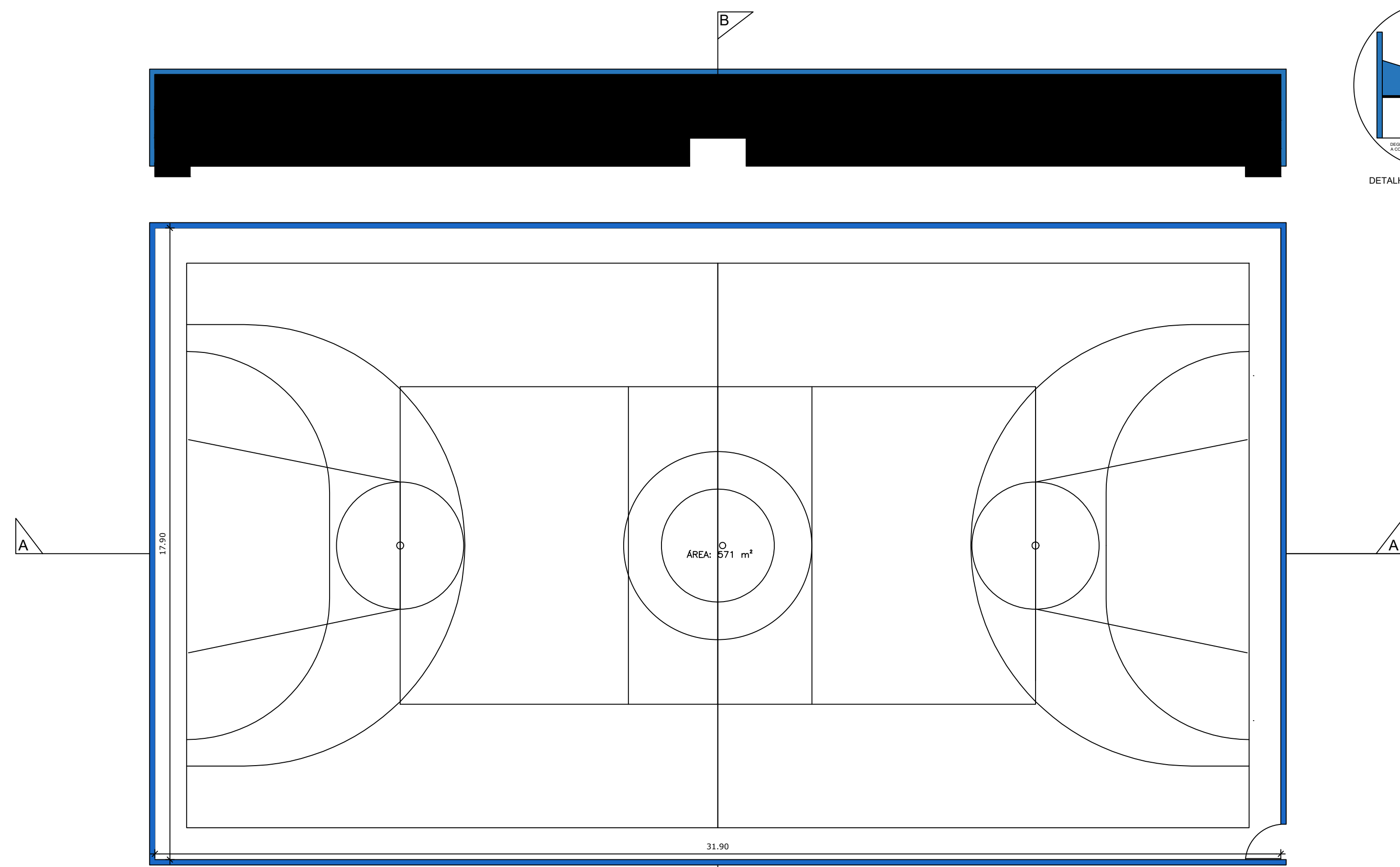
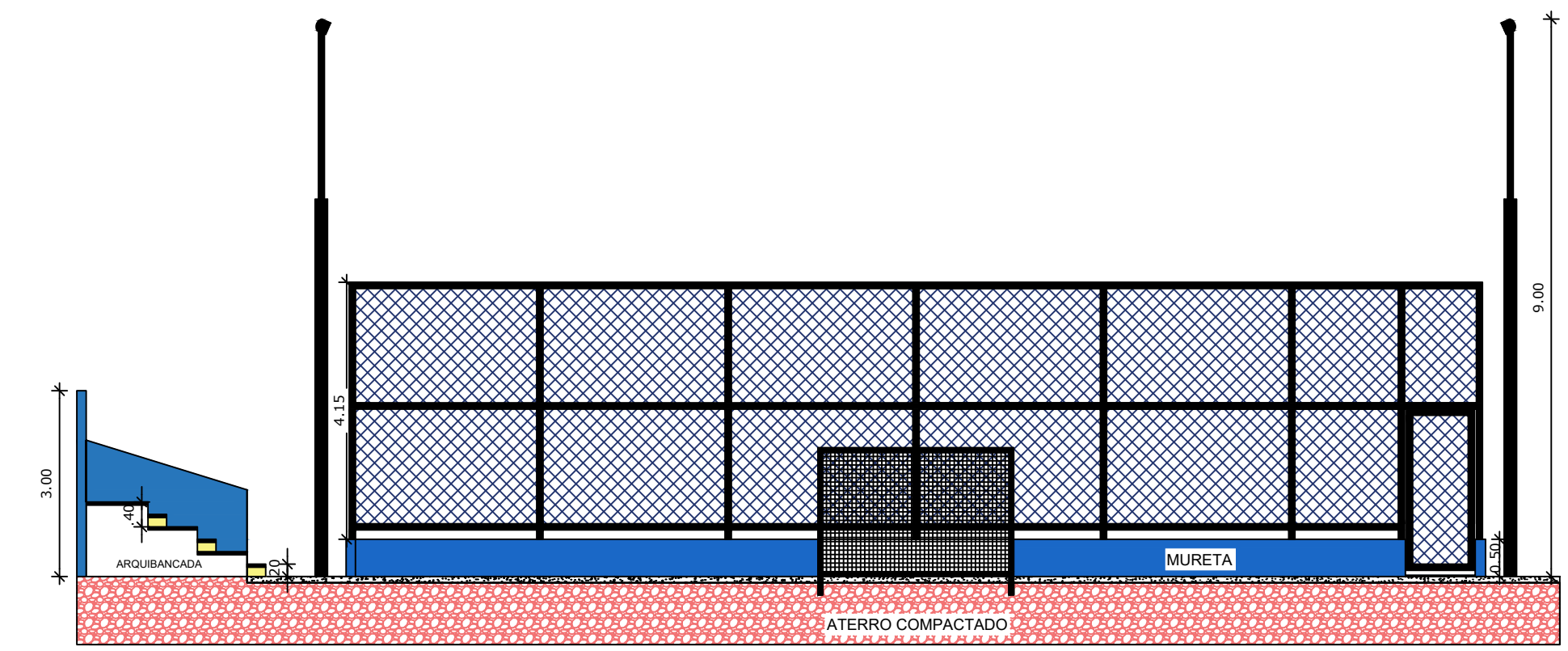
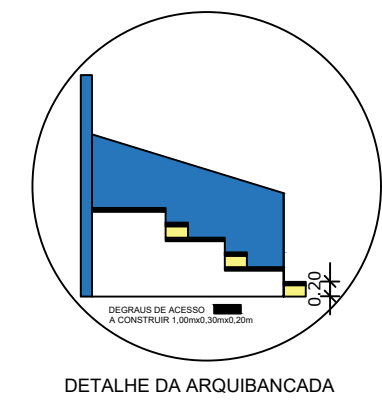


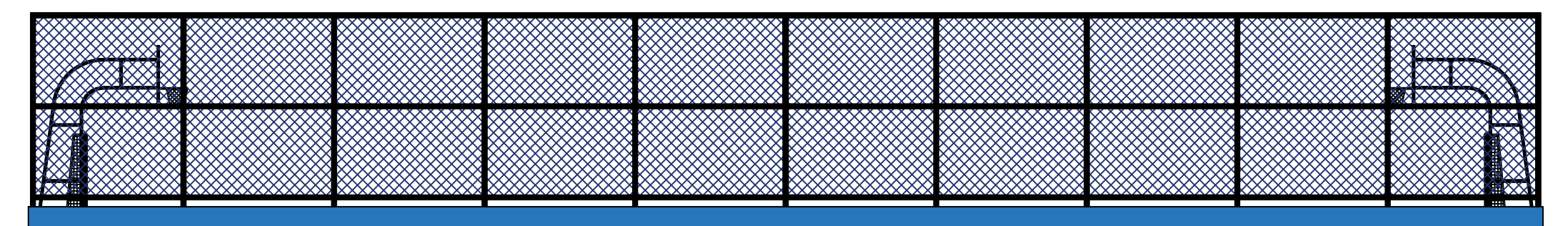
QUADRA DA LAGOA NOVA



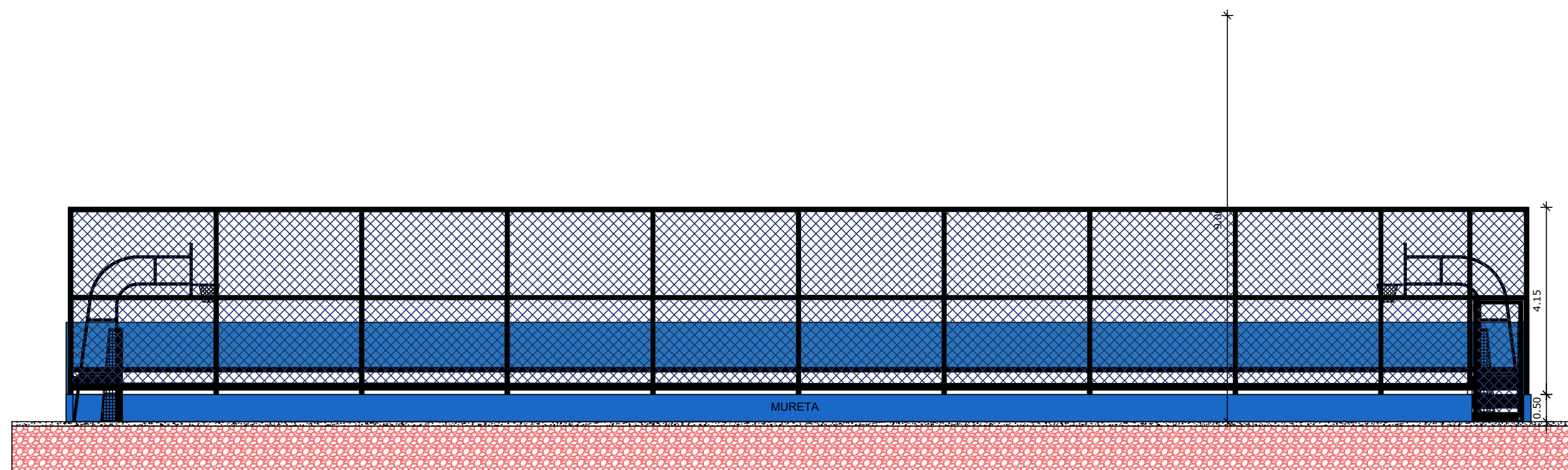
PLANTA BAIXA QUADRA POLIESPORTIVA
ESCALA 1:100



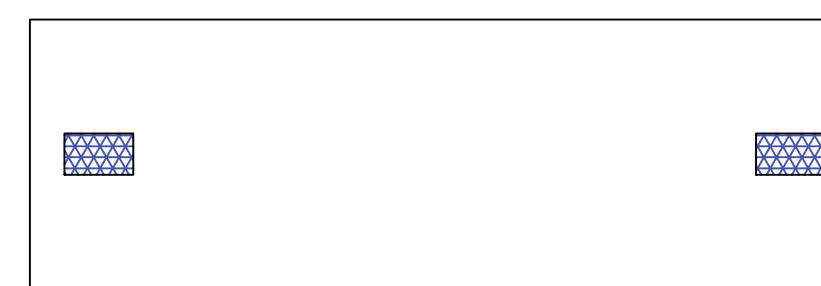
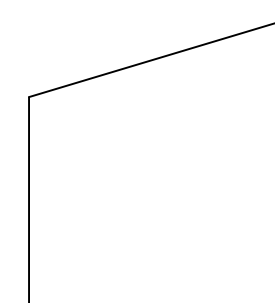
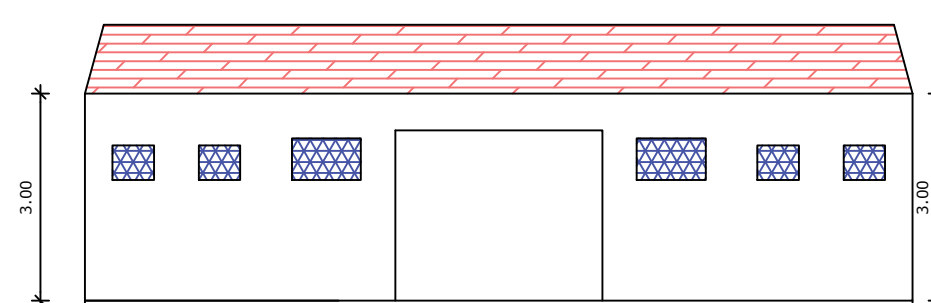
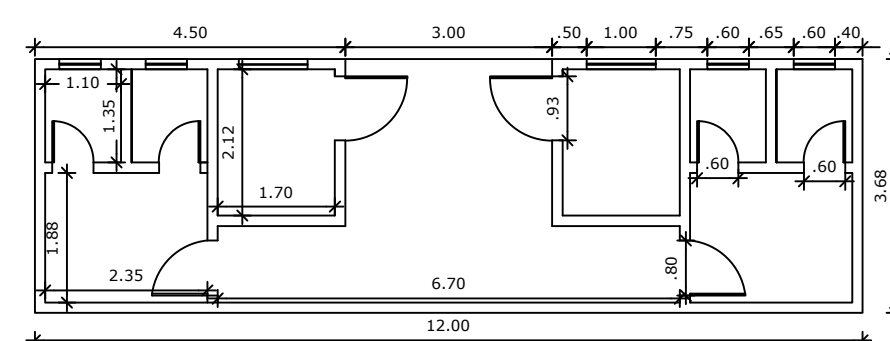
CORTE BB
ESCALA 1:100



FACHADA
ESCALA 1:100



CORTE AA
ESCALA 1:100



QUADRA POLIESPORTIVA - LAGOA NOVA	
ENDEREÇO OBRA: MUNICIPIO DE CÂNDIDO SALES	Nº ART:
ÁREAS:	RESPONSÁVEL TÉCNICO:
CONTRATANTE:	KARLA STEPHANY SILVA CARVALHO ENGENHEIRA CIVIL CREA 002841705-4
PREFEITURA MUNICIPAL DE CÂNDIDO SALES	DATA: 08/2022
	ESCALA: INDICADA
CONTÉM: PLANTA BAIXA, CORTE AA, CORTE BB, FACHADA, DETALHE ARQUIBANCADA	PRANCHA: 01/01