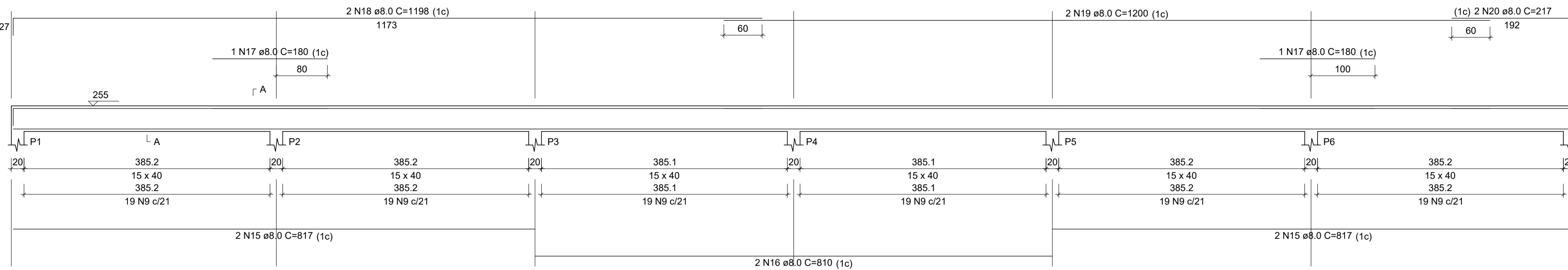
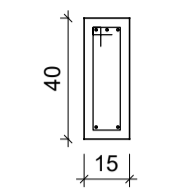


### V1

ESC 1:50

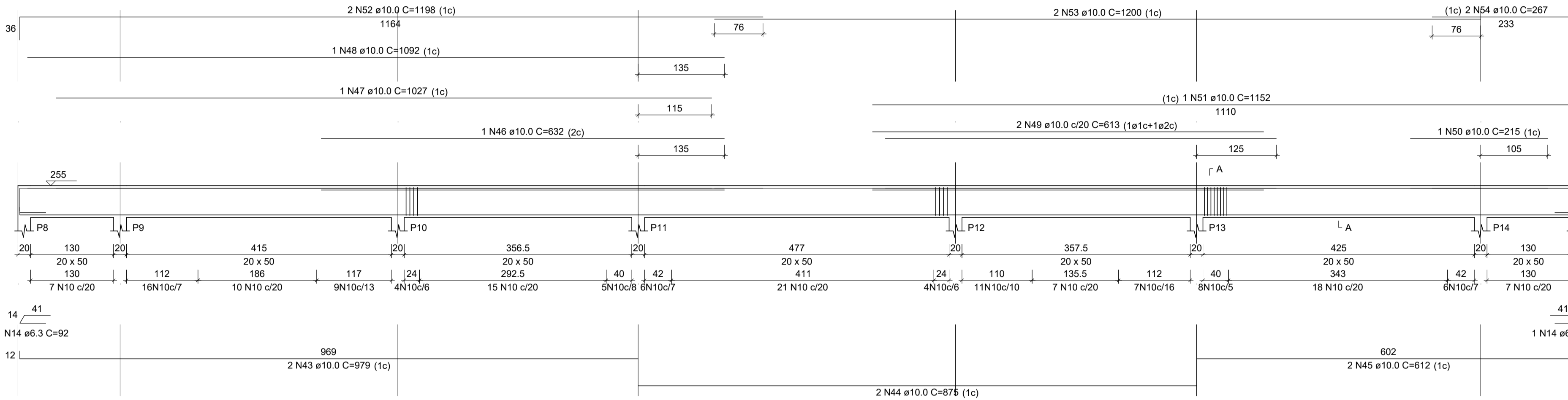


SEÇÃO A-A  
ESC 1:25

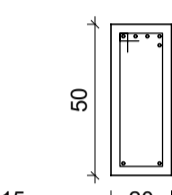


### V2

ESC 1:50

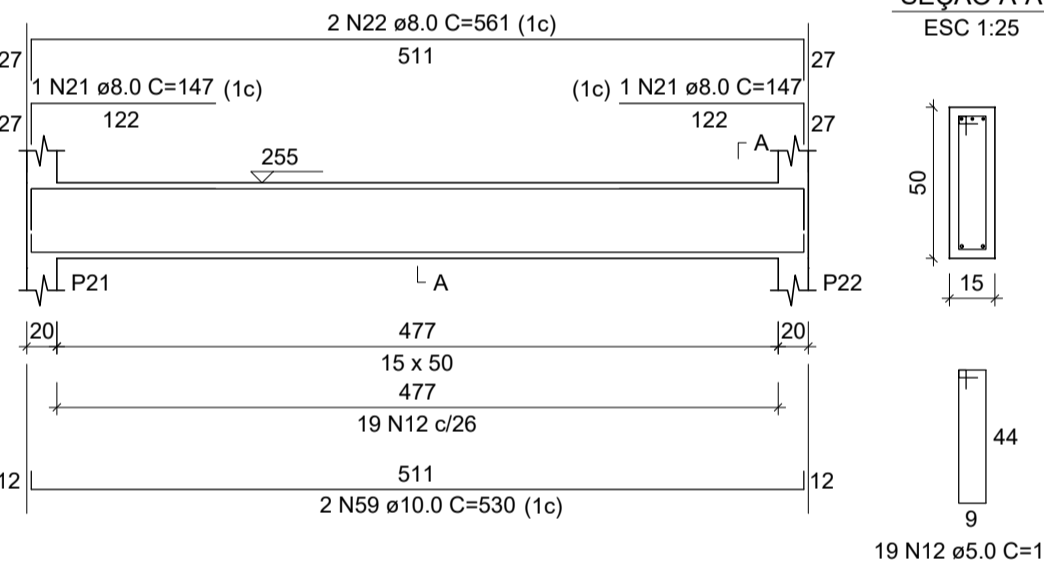


SEÇÃO A-A  
ESC 1:25

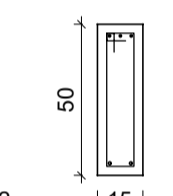


### V4

ESC 1:50

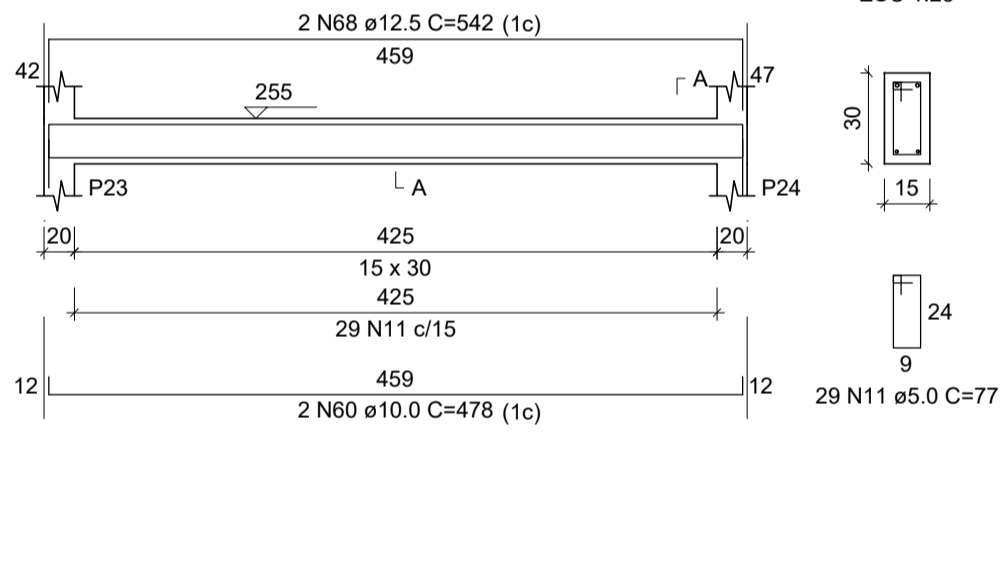


SEÇÃO A-A  
ESC 1:25

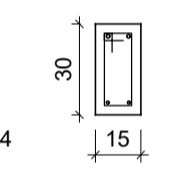


### V5

ESC 1:50

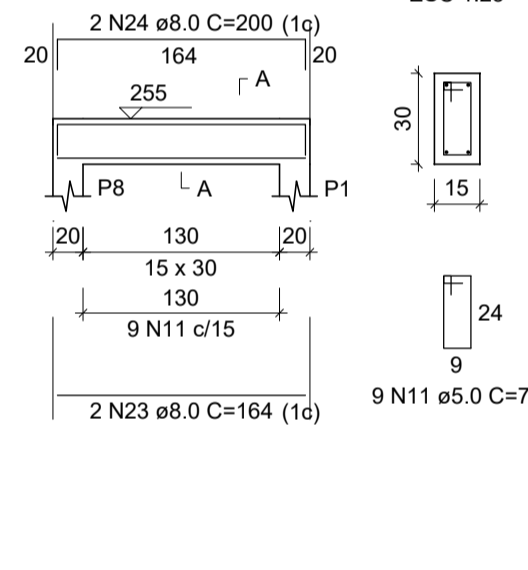


SEÇÃO A-A  
ESC 1:25

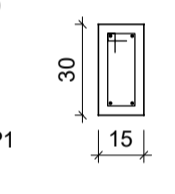


### V6

ESC 1:50

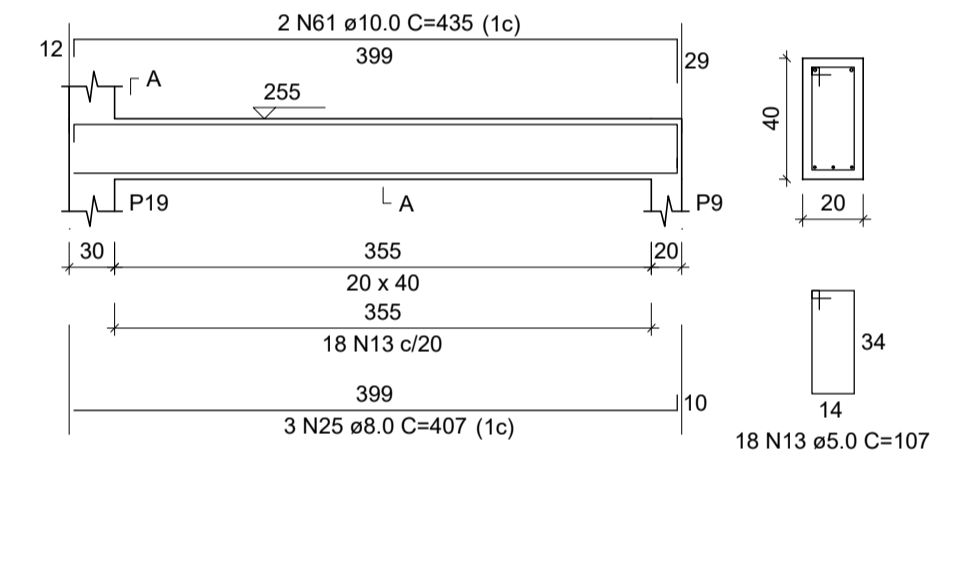


SEÇÃO A-A  
ESC 1:25

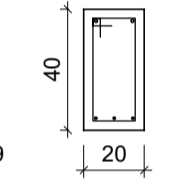


### V7

ESC 1:50

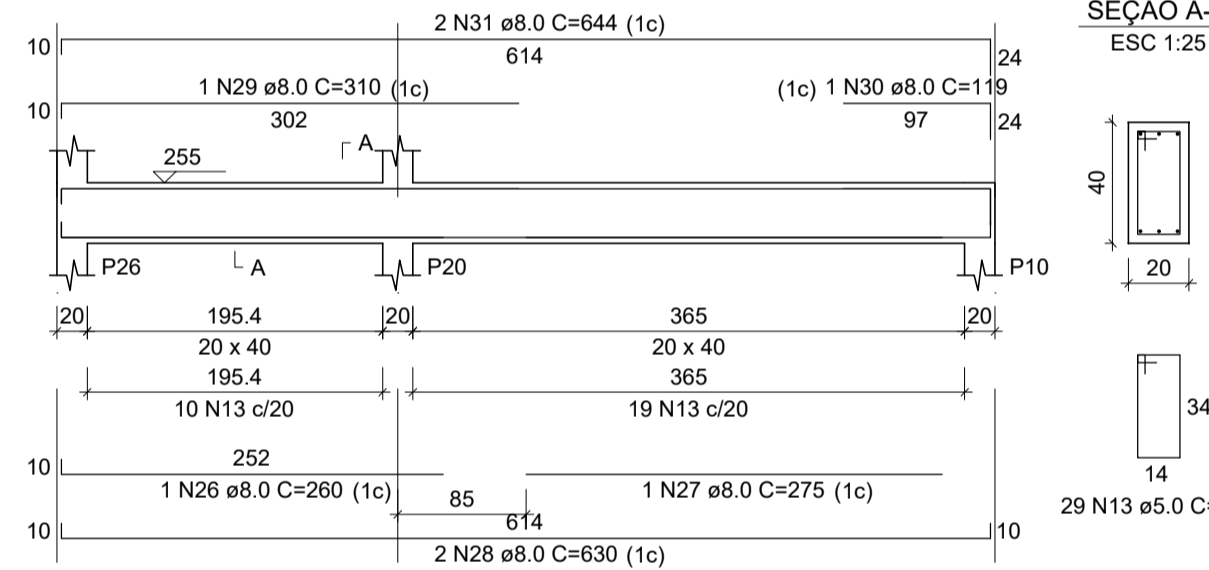


SEÇÃO A-A  
ESC 1:25

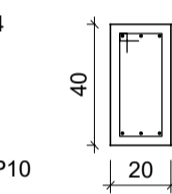


### V8

ESC 1:50

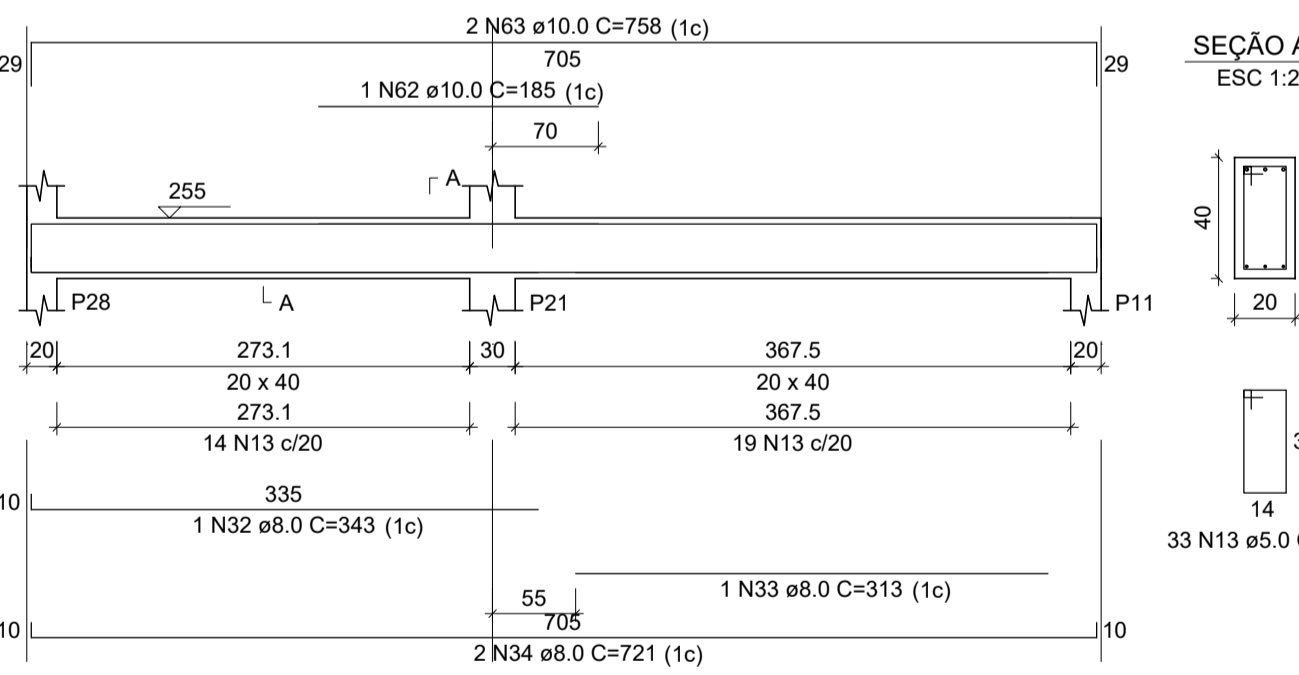


SEÇÃO A-A  
ESC 1:25

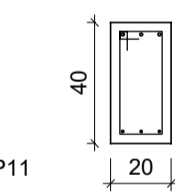


### V9

ESC 1:50

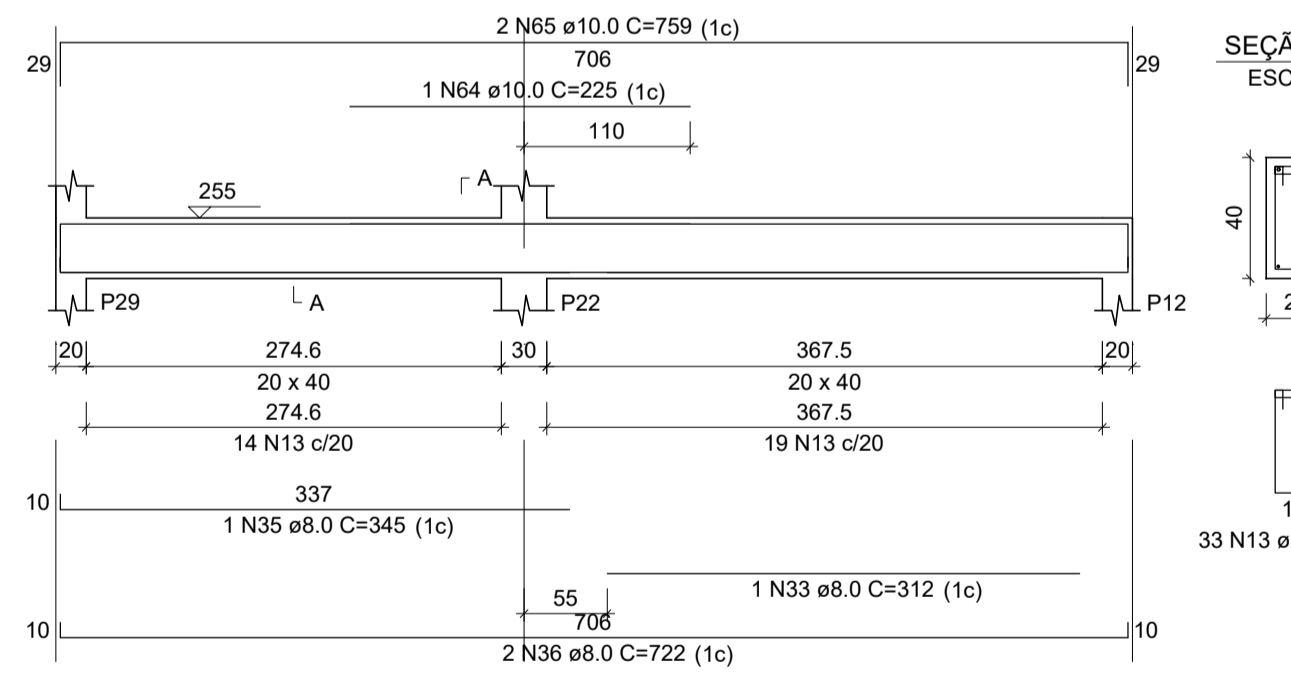


SEÇÃO A-A  
ESC 1:25

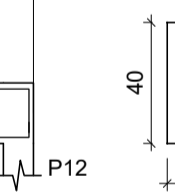


### V10

ESC 1:50

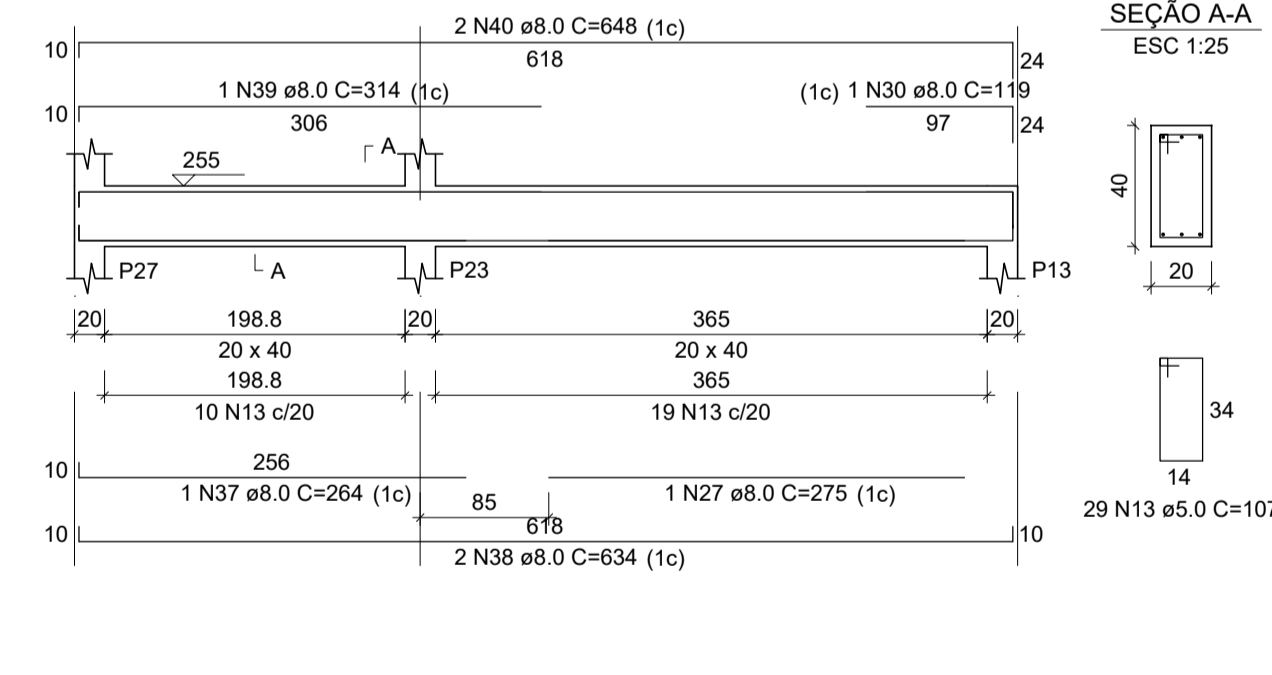


SEÇÃO A-A  
ESC 1:25

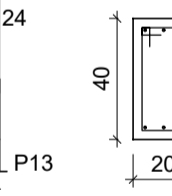


### V11

ESC 1:50

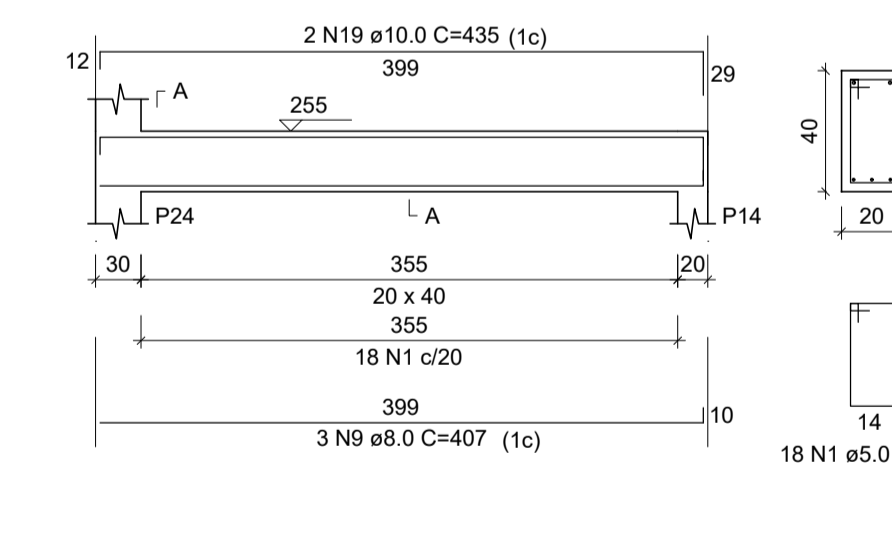


SEÇÃO A-A  
ESC 1:25

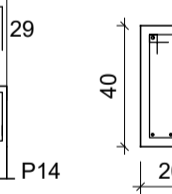


### V12

ESC 1:50

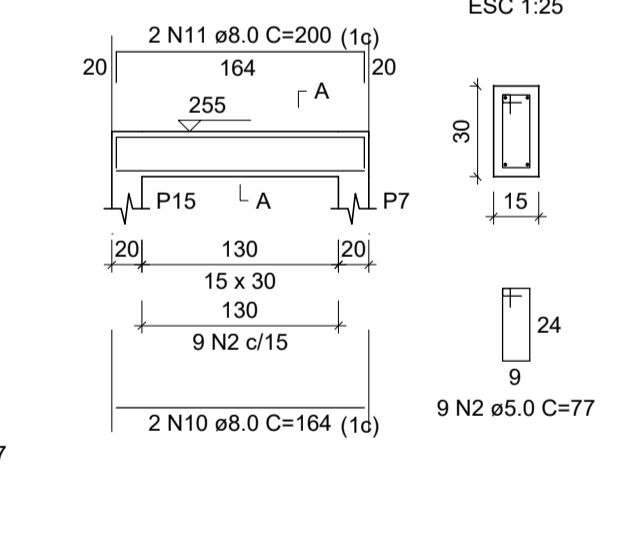


SEÇÃO A-A  
ESC 1:25

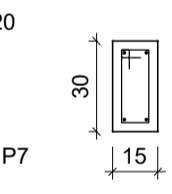


### V13

ESC 1:50

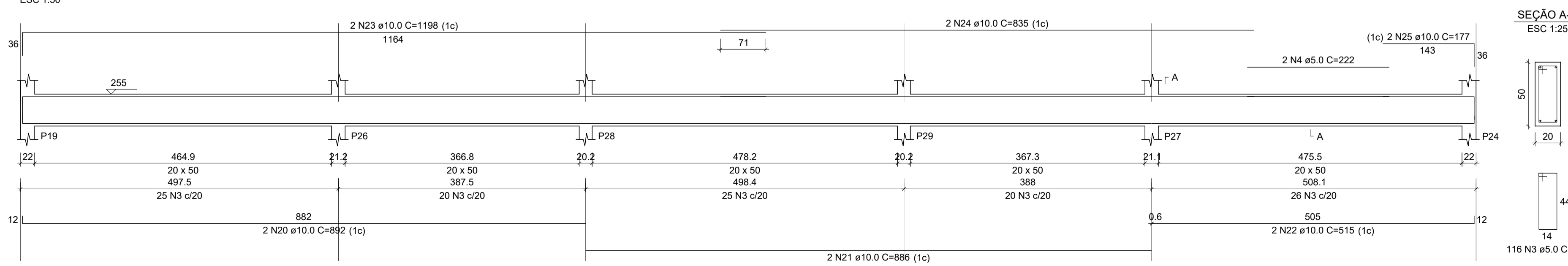


SEÇÃO A-A  
ESC 1:25

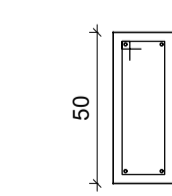


### V14

ESC 1:50

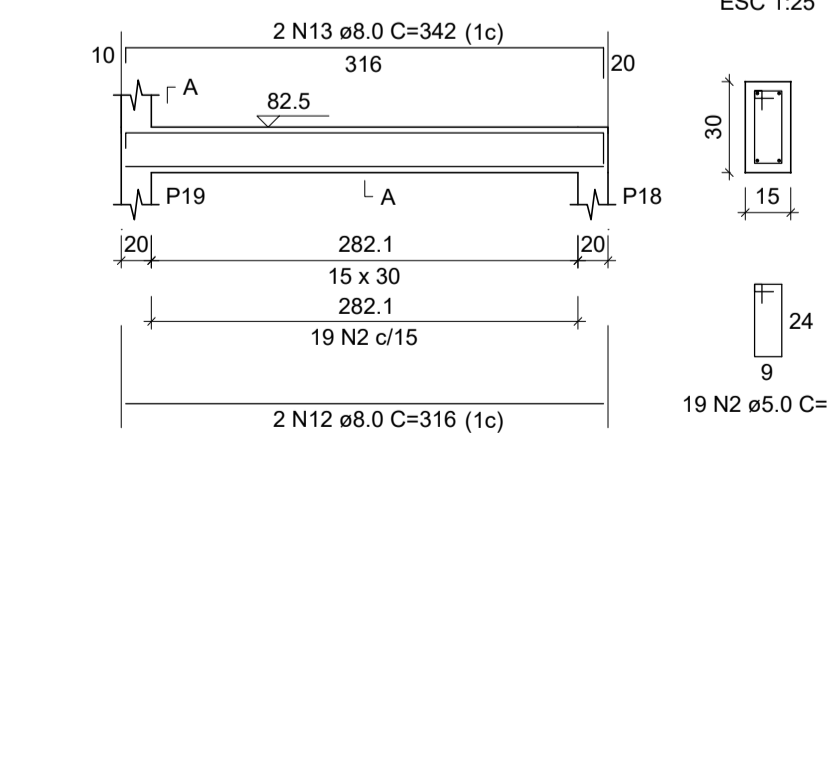


SEÇÃO A-A  
ESC 1:25

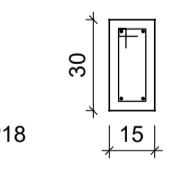


### V15

ESC 1:50



SEÇÃO A-A  
ESC 1:25



#### RELAÇÃO DO AÇO

AÇO	N	DIAM (mm)	QUANT	C.UNIT (cm)	C.TOTAL (cm)
CA60	1	5.0	130	67	8710
	2	5.0	88	54	3872
	3	5.0	10	57	570
	4	5.0	12	44	528
	5	5.0	42	29	1218
	6	5.0	68	87	6003
	7	5.0	38	64	2432
	8	5.0	46	29	1334
	9	5.0	114	97	11058
	10	5.0	161	127	20447
	11	5.0	66	77	5082
	12	5.0	19	117	2223
	13	5.0	142	107	15194
CA50	14	6.3	2	92	184
	15	8.0	4	817	3268
	16	8.0	2	1200	2400
	17	8.0	2	180	360
	18	8.0	2	1198	2396
	19	8.0	2	1200	2400
	20	8.0	2	217	434
	21	8.0	2	147	294
	22	8.0	2	561	1122
	23	8.0	2	164	328
	24	8.0	2	200	400
	25	8.0	3	407	1221
	26	8.0	1	260	260
	27	8.0	2	275	550
	28	8.0	2	630	1260
	29	8.0	2	310	620
	30	8.0	2	119	238
	31	8.0	2	644	1288
	32	8.0	1	343	343
	33	8.0	2	313	626
	34	8.0	2	721	1442
	35	8.0	1	345	345
	36	8.0	1	722	1444
	37	8.0	1	264	264
	38	8.0	2	634	1268
	39	8.0	1	314	314
	40	8.0	2	648	1296
	41	10.0	8	79	632
	42	10.0	28	293	8204
	43	10.0	2	979	1958
	44	10.0	2	875	1750
	45	10.0	2	612	1224
	46	10.0	1	832	832
	47	10.0	1	1027	1027
	48	10.0	1	1092	1092
	49	10.0	2	613	1226
	50	10.0	1	215	215
	51	10.0	1	1152	1152
	52	10.0	2	1198	2396
	53	10.0	2	1200	2400
	54	10.0	2	267	534
	55	10.0	2	468	936
	56	10.0	1	163	163
	57	10.0	1	139	139
	58	10.0	2	516	1032
	59	10.0	2	530	1060
	60	10.0	2	478	956
	61	10.0	2	435	870
	62	10.0	1	185	185
	63	10.0	2	758	1516
	64	10.0	1	225	225
	65	10.0	2	759	1518
	66	12.5	8	252	2016
	67	12.5	20	302	6040
	68	12.5	2	542	1084

#### RESUMO DO AÇO

AÇO	DIAM (mm)	C.TOTAL (m)	PESO + 10% (kg)
CA50	6.3	1.8	0.5
	8.0	250.9	108.9
	10.0	330.4	224.1
	12.5	91.4	96.9
	5.0	784.7	133
<b>PESO TOTAL (kg)</b>			
CA50		430.3	
CA60		133	

Volume de concreto (C-25) = 8.73 m³  
Área de forma = 125.21 m²

OBRA: PROJETO ESTRUTURAL- DET. VIGA SUPERIOR (ACIMA DO BANHEIRO)

ENDEREÇO: PCA MOISÉS FÉLIX DOS SANTOS, Nº 274, CENTRO, CÂNDIDO SALES-BA

RESP.TÉCNICO: \_\_\_\_\_ PROPRIETÁRIO: \_\_\_\_\_

KAIO VINNÍCIUS LIMA SOARES CREA: 86052/BA PREFEITURA MUNICIPAL DE CÂNDIDO SALES CNPJ: 13.857.123/0001-95

ESCALA: INDICADA DATA: AGOSTO/2022 FORMATO: A1 FOLHA: 06/10