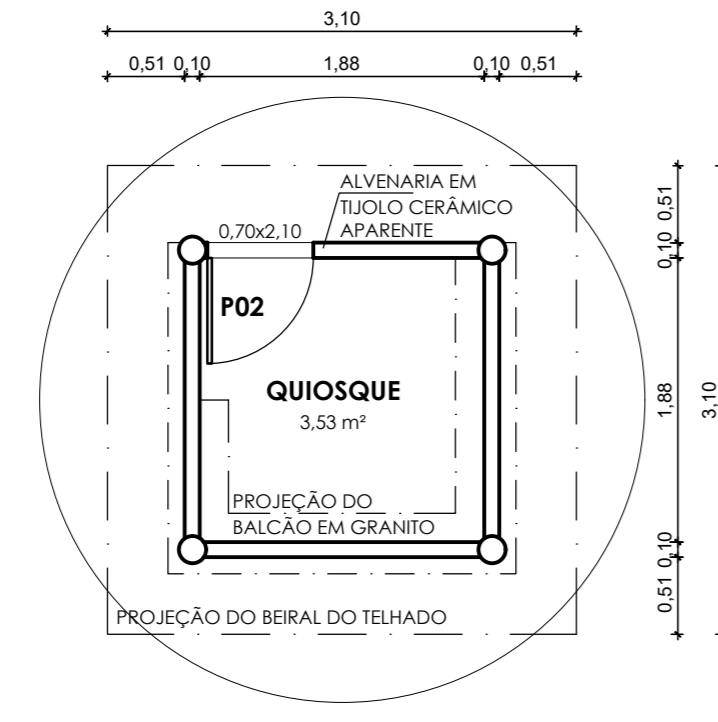
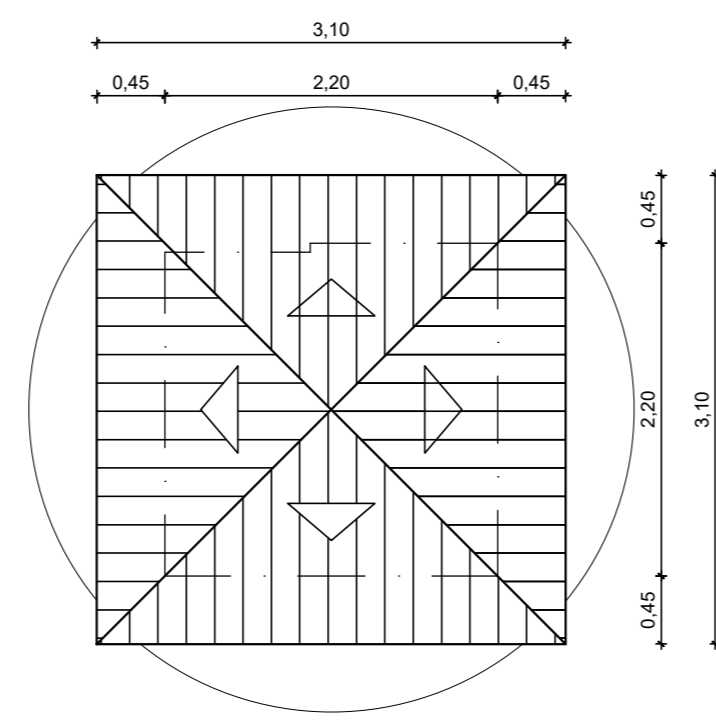


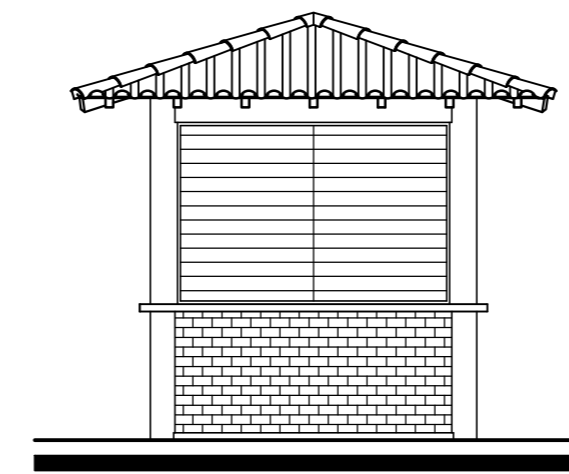
PLANTA BAIXA - QUIOSQUE TIPO 1
(NÍVEL DO BALCÃO)
ESCALA: 1/50



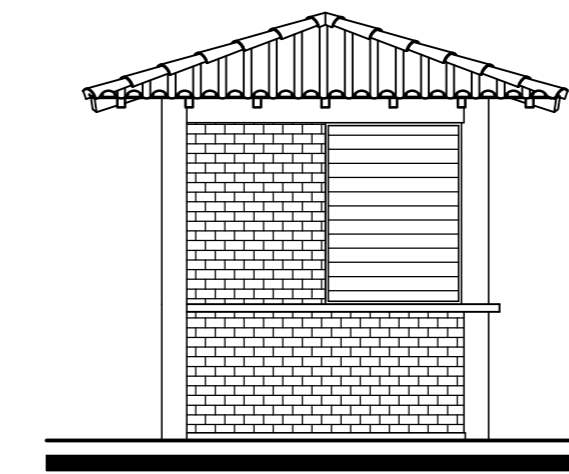
PLANTA BAIXA - QUIOSQUE TIPO 1
(NÍVEL DA ALVENARIA)
ESCALA: 1/50



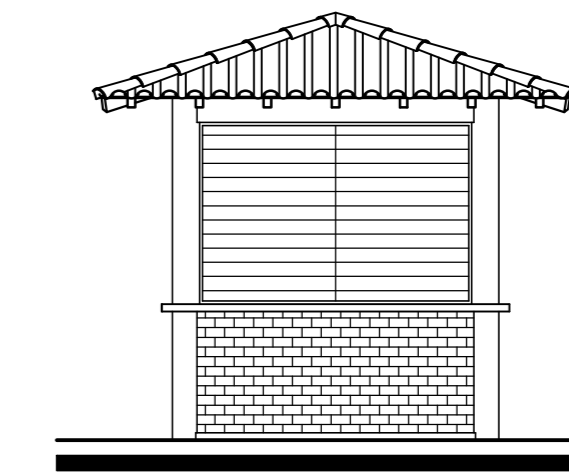
PLANTA BAIXA COBERTURA - QUIOSQUE TIPO 1
ESCALA: 1/50



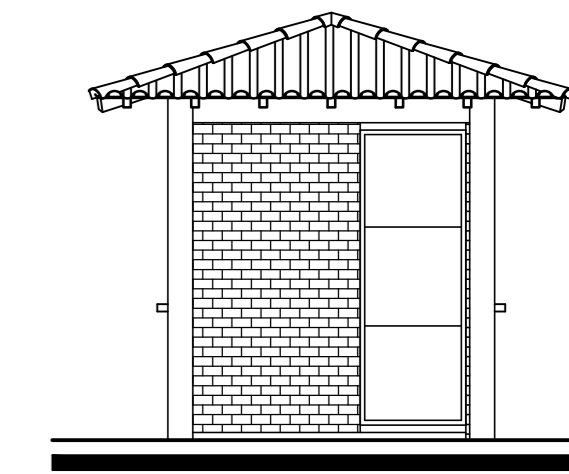
FACHADA FRONTAL
(QUIOSQUE TIPO 1)
ESCALA: 1/50



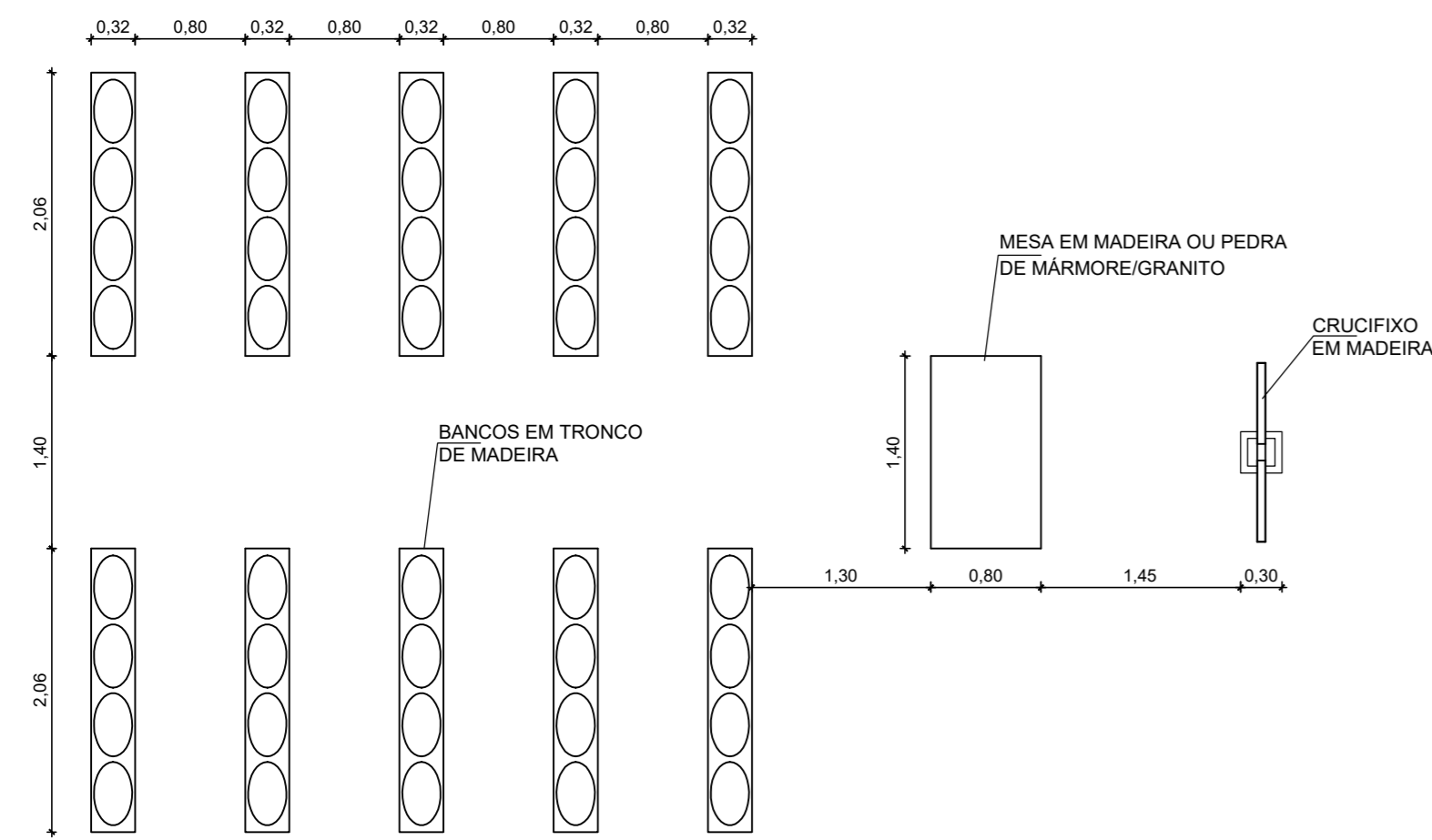
FACHADA LATERAL ESQUERDA
(QUIOSQUE TIPO 1)
ESCALA: 1/50



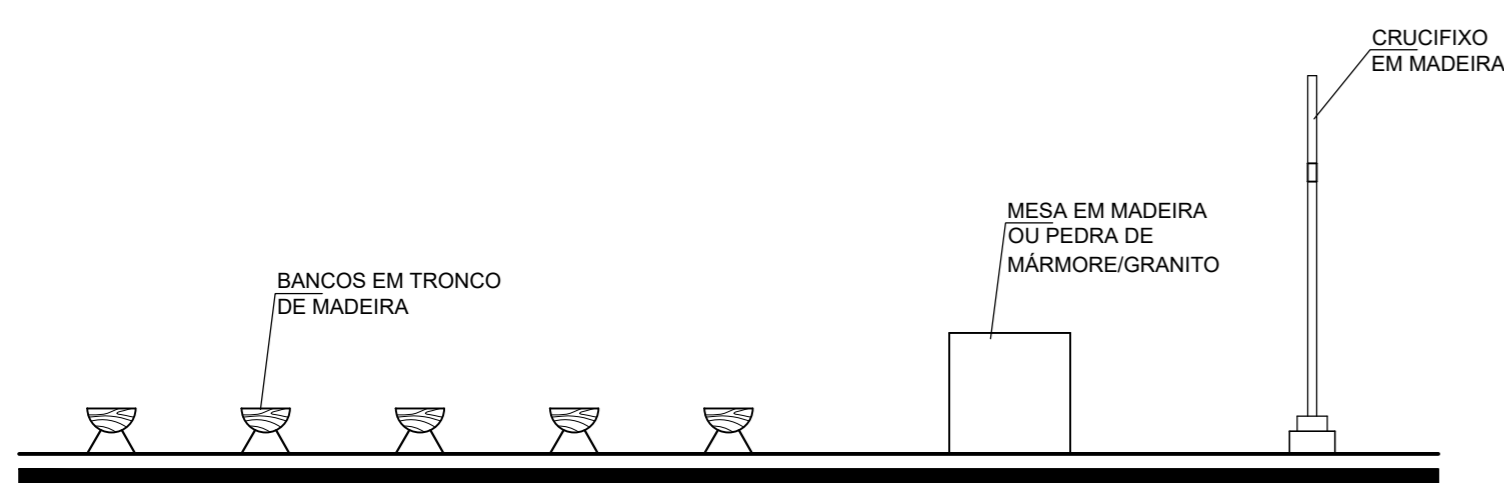
FACHADA LATERAL DIREITA
(QUIOSQUE TIPO 1)
ESCALA: 1/50



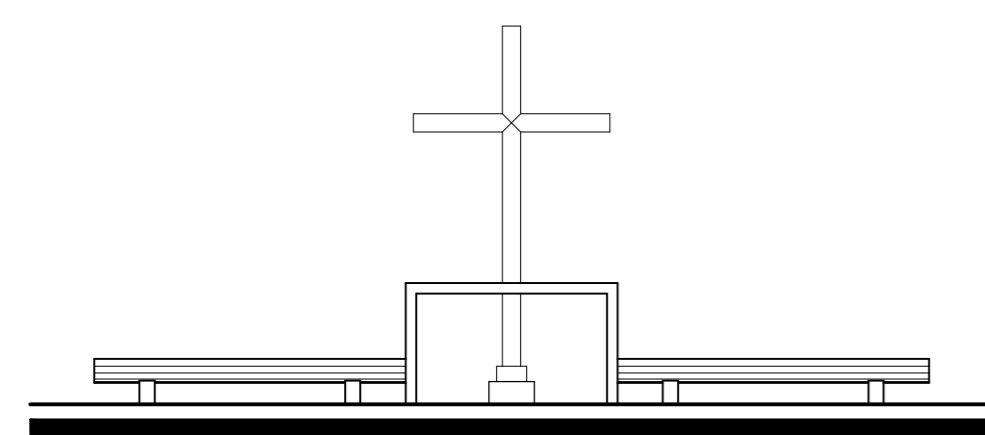
FACHADA POSTERIOR
(QUIOSQUE TIPO 1)
ESCALA: 1/50



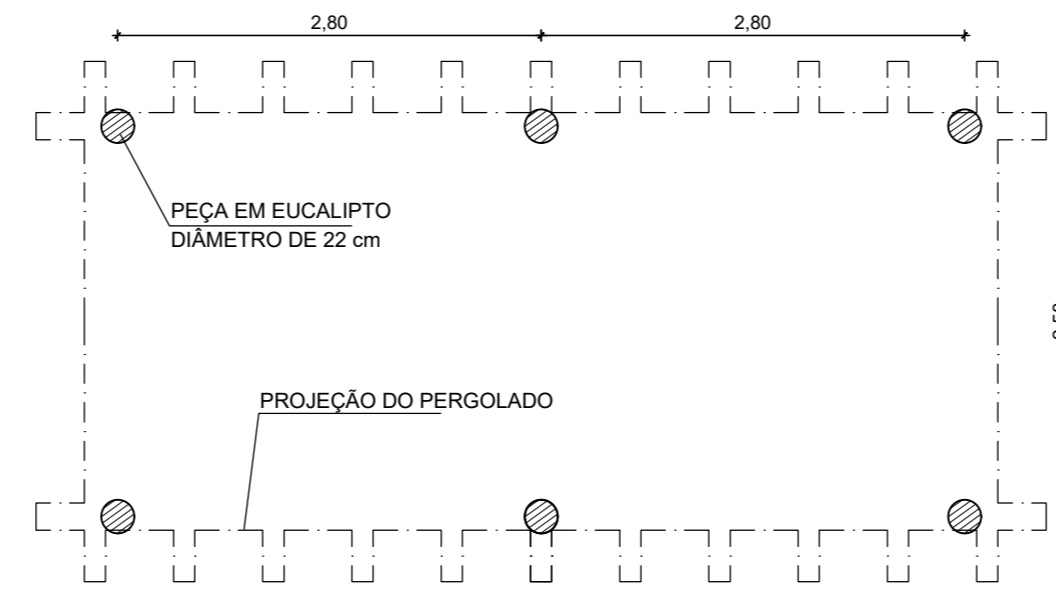
CAPELA AO AR LIVRE - PLANTA BAIXA
ESCALA: 1/50



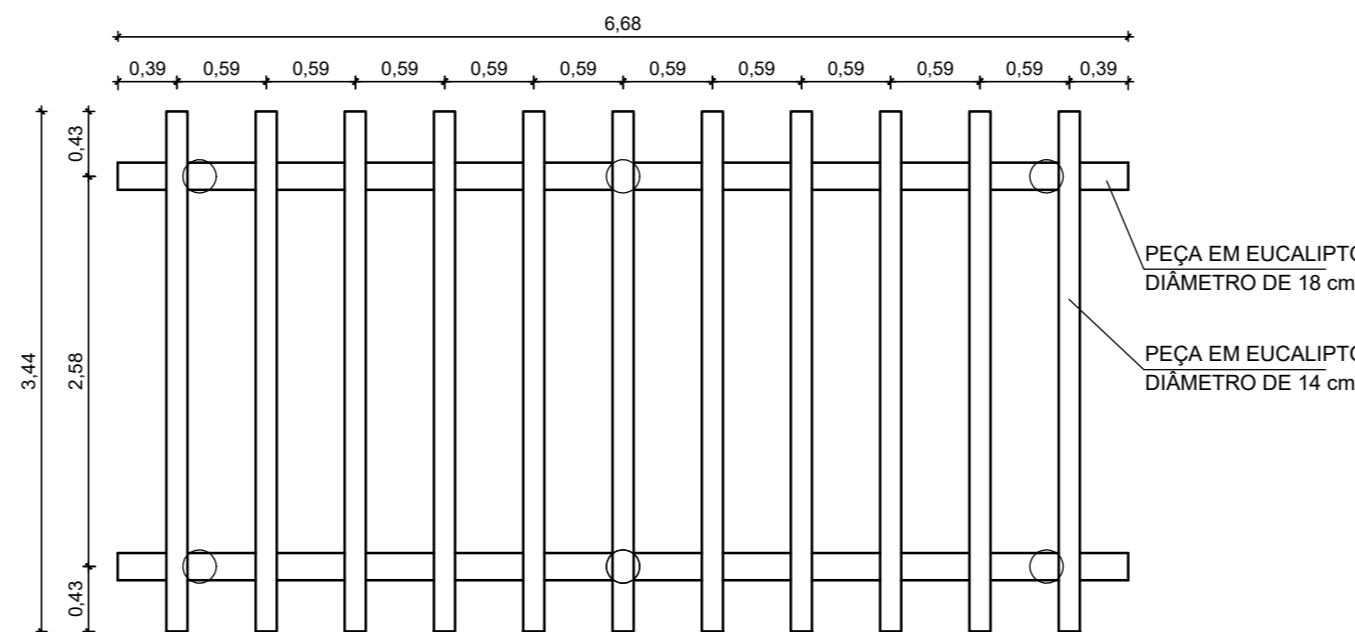
CAPELA AO AR LIVRE - VISTA LATERAL
ESCALA: 1/50



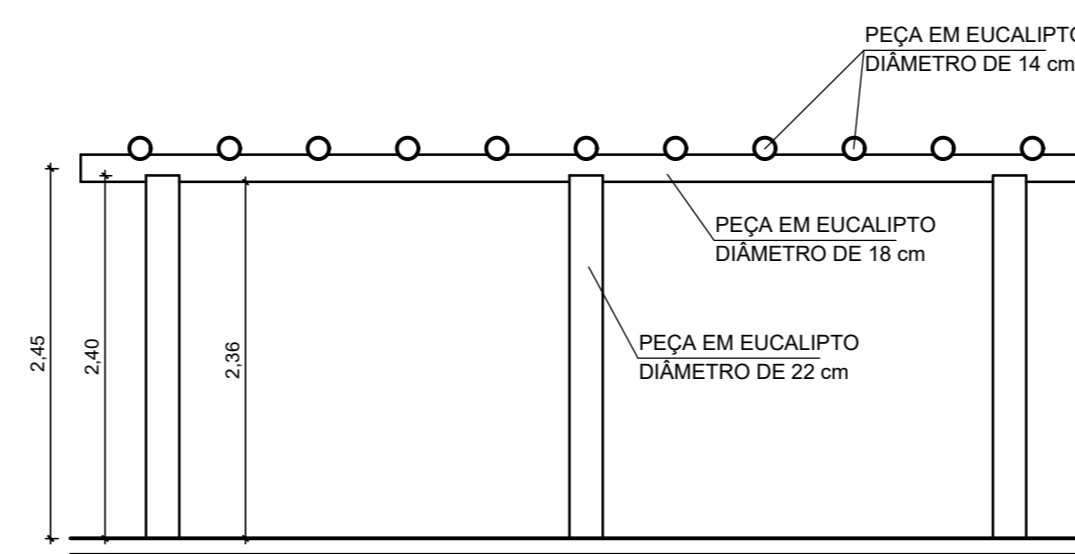
CAPELA AO AR LIVRE - VISTA FRONTAL
ESCALA: 1/50



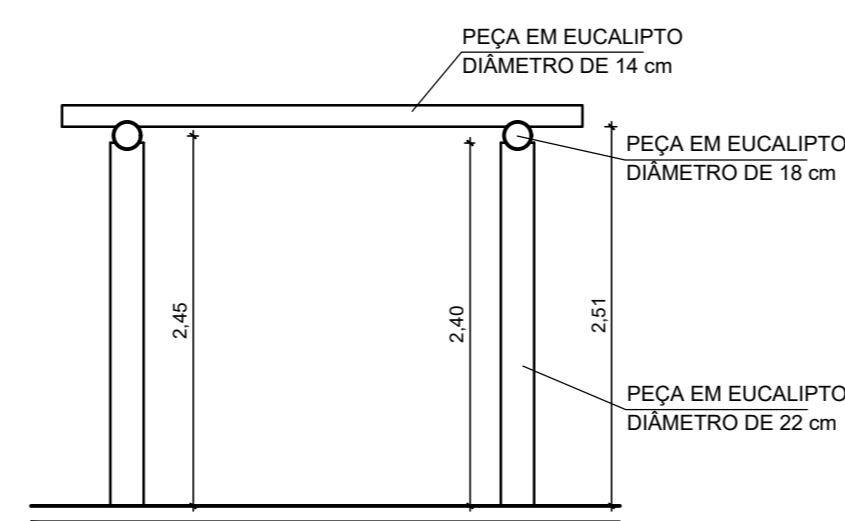
PERGOLADO 01 - PLANTA BAIXA
ESCALA: 1/50



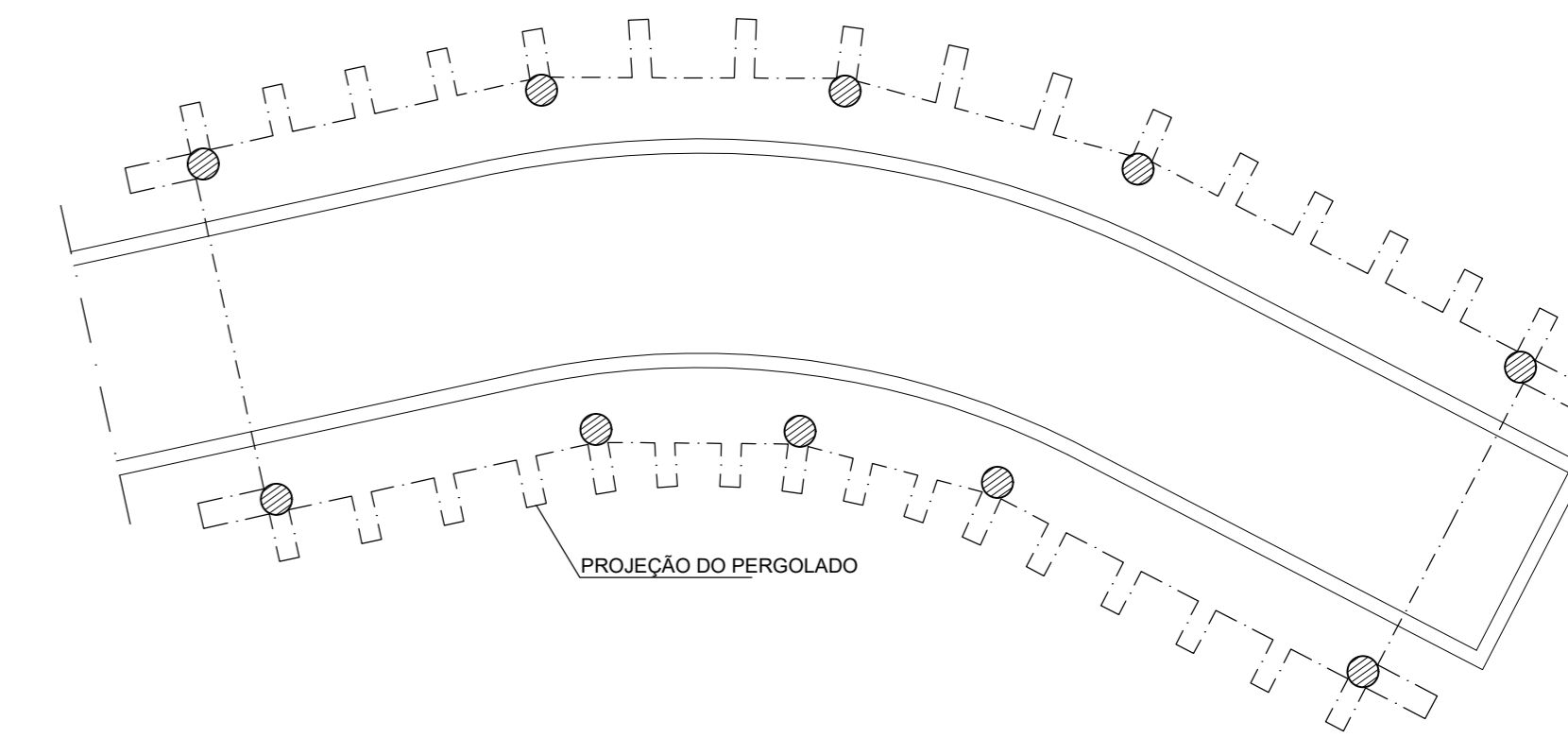
PERGOLADO 01 - VISTA DE TOPO
ESCALA: 1/50



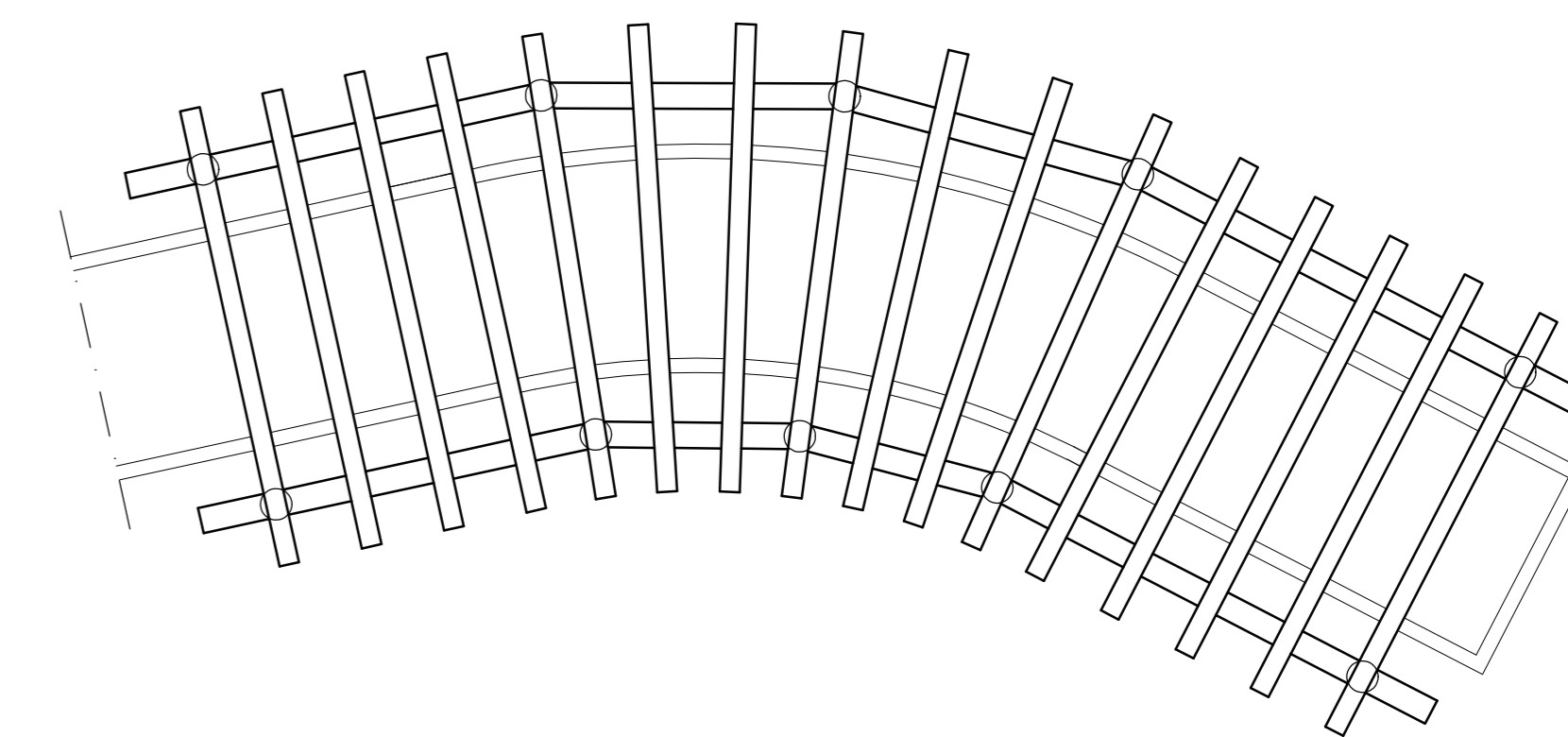
PERGOLADO 01 - VISTA LATERAL
ESCALA: 1/50



PERGOLADO 01 - VISTA FRONTAL
ESCALA: 1/50



PERGOLADO 02 - PLANTA BAIXA
ESCALA: 1/50



PERGOLADO 02 - VISTA DE TOPO
ESCALA: 1/50

REVISÃO		
Nº	DATA	MODIFICAÇÃO
03		
02		
01		
00	xx/xx/xxxx	Emissão inicial

	PREFEITURA MUNICIPAL DE SANTO AMARO SEINFRA - SECRETARIA MUNICIPAL DE INFRAESTRUTURA E DESENVOLVIMENTO URBANO	OBRA: REQUALIFICAÇÃO DA ORLA DE ITAPEMA ENDEREÇO: PRAIA DE ITAPEMA, SANTO AMARO/BA
	ASSUNTO: DETALHES CONSTRUTIVOS - QUIOSQUE TIPO 3, PERGOLADOS E CAPELA AO AR LIVRE	
RESP. TÉCNICO: MARCUS VINÍCIUS DIAS (ARQUITETO CAU/BA A34034-0)	CORRRESP. TÉCNICO:	FOLHA:
GESTOR: ALESSANDRA GOMES		14
		1/50