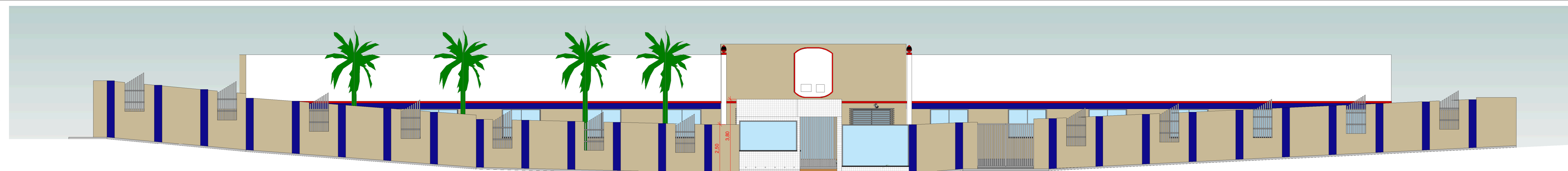
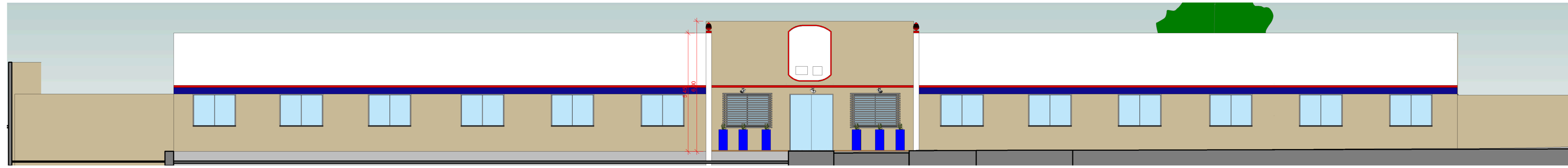


1 A ESCALA 1:100



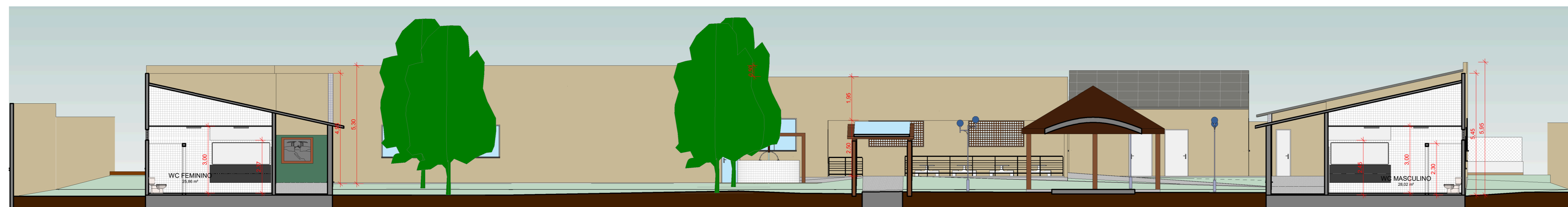
2 B ESCALA 1:100



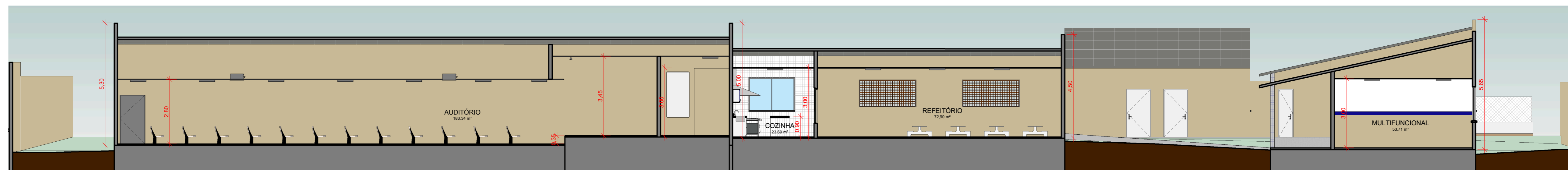
3 C ESCALA 1:100



4 D ESCALA 1:100



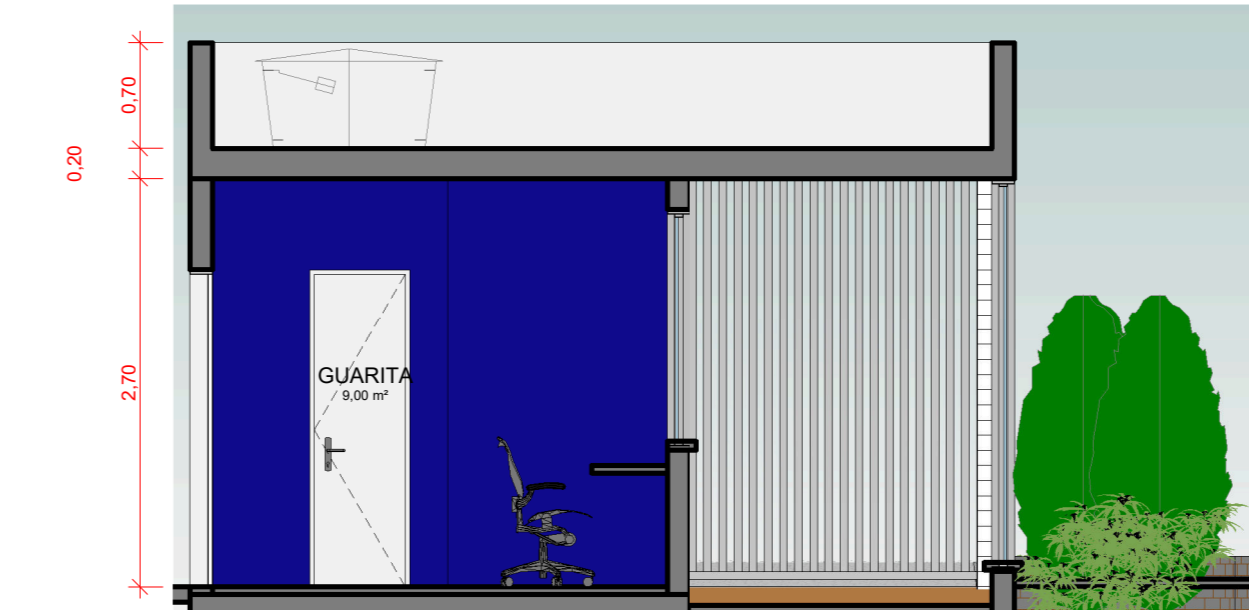
5 E ESCALA 1:100



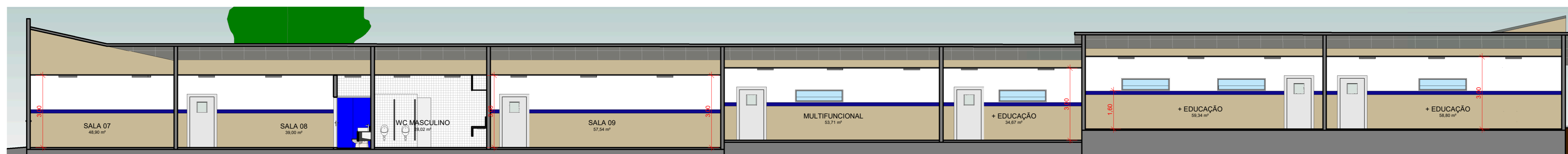
6 F ESCALA 1:100



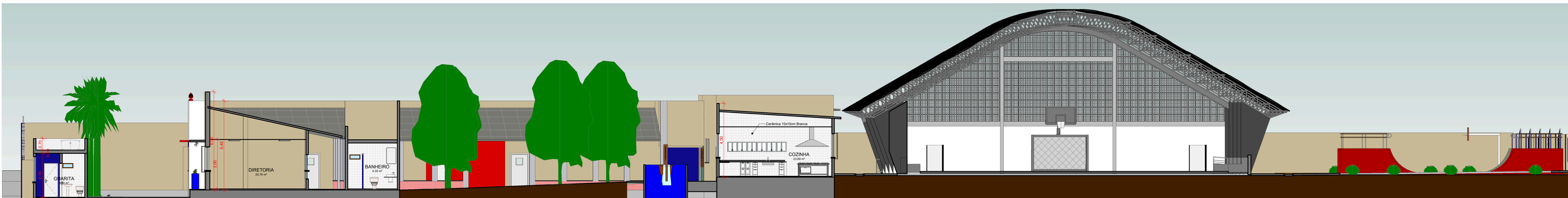
8 H ESCALA 1:50



7 G ESCALA 1:100



9 ESCALA 1:100



10 J ESCALA 1:100



*Edvaldo Azevedo*

RESP. TÉCNICO

PROPRIETÁRIO

SECRETARIA MUNICIPAL DE EDUCAÇÃO DE BUERAREMA



R. Ubaldo Ramos, s/n, Centro, Buerarema - BA, 45615-000

TÍTULO:

REFORMA DA ESCOLA MUNICIPAL JOSÉ NERY CONSTANT  
Av. Góes Calmon, 383 - Centro, Buerarema - BA, 45615-000

PROJETO:

CORTES

PROPRIETÁRIO:

PREFEITURA MUNICIPAL DE BUERAREMA



Av. Góes Calmon, 591, Centro, Buerarema - BA, 45615-000

EQUIPE TÉCNICA:  
EDNALDO SANTOS AZEVEDO CREA 0594993070  
LEONARDO SANTOS MENEZES CREA 0517991616

DESENHO: LEONARDO SANTOS MENEZES

ARQ

FOLHA 02

REVISÃO 01 DATA DEZ/2022 ESCALA 1/100